

grip 工業機器人周邊部件



GRIPPER
氣囊內孔夾具 & 氣壓精密強力夾爪

Gi
GiS
GP
GZ

Internal
Gripper
&
Gripper

氣囊
內孔夾具
&
氣壓精密
強力夾爪

MGW
SHW
SWA
SWS

Quick-
Change-
System

手動快速
換模系列

MEK
SEK
DDF

Swivel
&
Energy
Coupling

氣壓
旋轉接頭
&
氣/電
快速連接器



Gi 氣囊內孔夾具 Internal Gripper

- 內部夾具浸入鑽孔中，通過氣壓膨脹矽膠膜來擴大產生夾持力，保持在孔內壁上。當氣壓關閉時，矽膠膜由於彈性行為而縮回到夾具中
- 規格：17種，最小安裝尺寸，從內徑4mm~20mm
- 彈性矽膠膜使用壽命長
- 可快速更換隔膜
- 夾持工件重量: 0.1~6kg
- 2D&3D提供

03~19頁



GiS 氣囊內孔夾具 Internal Gripper Abatement

- Gi優化夾持區設計，內部夾具，通過氣壓膨脹矽膠膜來擴大產生夾持力，保持在孔內壁上。當氣壓關閉時，矽膠膜由於彈性行為而縮回到夾具中
- 規格：16種，最小安裝尺寸，從內徑5mm~20mm
- 彈性矽膠膜使用壽命長
- 可快速更換隔膜
- 夾持工件重量: 0.4~6kg
- 2D&3D提供

20~35頁



GP 氣壓精密強力平行夾爪 Parallel gripper

- 規格：5種，每一規格有2種行程
- 夾持力：280N~4900N
- 高壽命
- 2D&3D提供
- 符合DIN EN ISO 9409-12標準的機械接口

36~41頁



GZ 氣壓精密強力Y夾爪 Pincer gripper

- 規格：10種
- 開啟角度60°，可調
- 堅固耐用的機械結構，延長使用壽命
- 2D&3D提供
- 符合DIN EN ISO 9409-12標準的機械接口

42~47頁

手動換模器 Quick-Change-System

MGW 手動氣壓夾爪
快速換模連接器



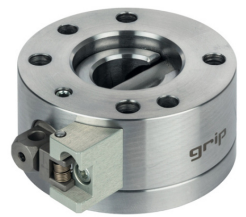
SHW 推力槓桿
快速換模連接器



SWA
快速換模連接器



SWS
快速換模連接器



氣壓4通道旋轉接頭&氣/真空和電快速連接器 Swivel & Energy-Coupling

MEK 氣/電
快速連接器



SEK 氣/電
快速連接器



DDF 空氣4通道
旋轉接頭



GI004 氣囊內孔夾具

Internal Gripper



Operating mode:

The internal grippers dip into drillings, enlarge their external diameter by expansion of the silicone membrane, under pressure, and thus frictionally engaged hold to the bore wall. When pressure is switched off, the silicone membrane self-reliant retracts into the grippers inside due to its elastic behavior.

Advantages:

- Minimum installation size possible
- low gripper weight
- Simple gripper principle
- cost-efficient
- quick diaphragm replacement possible
- Indirect request via pressure switch in the supply line possible

Gi
系列

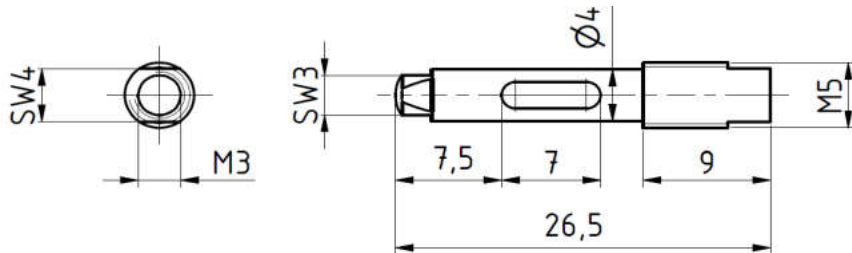
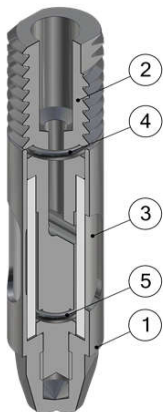
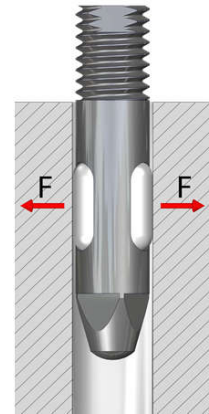
Gi004

- Gi005
- Gi006
- Gi007
- Gi008
- Gi009
- Gi010
- Gi011
- Gi012
- Gi013
- Gi014
- Gi015
- Gi016
- Gi017
- Gi018
- Gi019
- Gi020

Internal
Gripper

氣囊
內孔夾具

Technical specifications	GI004
Grip force (at 6 bar) [N]	1
Bore diameter [mm]	4,1 – 5,0
Allowed component weight [kg]	0,1
Gripper weight [kg]	0.002
Compressed air connection Ø	M3
Assembly Ø	M5
Stroke cycles at ideal application conditions	500.000



Pos.	Description
1	Hull
2	Mandrel
3	Tube
4	O-Ring 1
5	O-Ring 2

Internal Gripper Ø004...

G-GI004 External diameter 4, screw thread M5

Replacement tube

EG-GI004-S for internal gripper GI004

Gi 系列

Gi004 Gi005

- Gi006
- Gi007
- Gi008
- Gi009
- Gi010
- Gi011
- Gi012
- Gi013
- Gi014
- Gi015
- Gi016
- Gi017
- Gi018
- Gi019
- Gi020

Internal
Gripper

氣囊
內孔夾具



Operating mode:

The internal grippers dip into drillings, enlarge their external diameter by expansion of the silicone membrane, under pressure, and thus frictionally engaged hold to the bore wall. When pressure is switched off, the silicone membrane self-reliant retracts into the grippers inside due to its elastic behavior.

Advantages:

Minimum installation size possible

low gripper weight

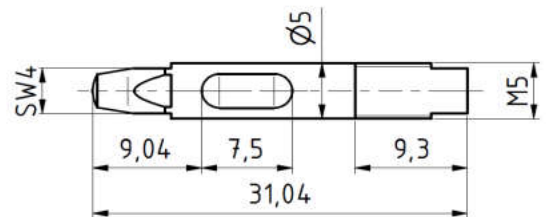
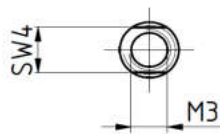
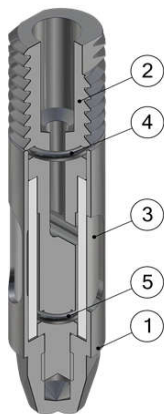
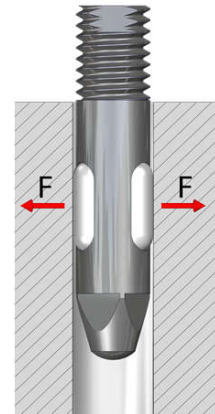
Simple gripper principle

cost-efficient

quick diaphragm replacement possible

Indirect request via pressure switch in the supply line possible

Technical specifications	GI005
Grip force (at 6 bar) [N]	4
Bore diameter [mm]	5,1 – 6,0
Allowed component weight [kg]	0,4
Gripper weight [kg]	0.003
Compressed air connection Ø	M3
Assembly Ø	M5
Stroke cycles at ideal application conditions	500.000



Pos.	Description
1	Hull
2	Mandrel
3	Tube
4	O-Ring 1
5	O-Ring 2

Internal Gripper Ø004...

G-GI005 External diameter 5, screw thread M5

Replacement tube

EG-GI005-S for internal gripper GI005

GI006 氣囊內孔夾具 Internal Gripper



Operating mode:

The internal grippers dip into drillings, enlarge their external diameter by expansion of the silicone membrane, under pressure, and thus frictionally engaged hold to the bore wall. When pressure is switched off, the silicone membrane self-reliant retracts into the grippers inside due to its elastic behavior.

Advantages:

- Minimum installation size possible
- low gripper weight
- Simple gripper principle
- cost-efficient
- quick diaphragm replacemet possible
- Indirect request via pressure switch in the supply line possible

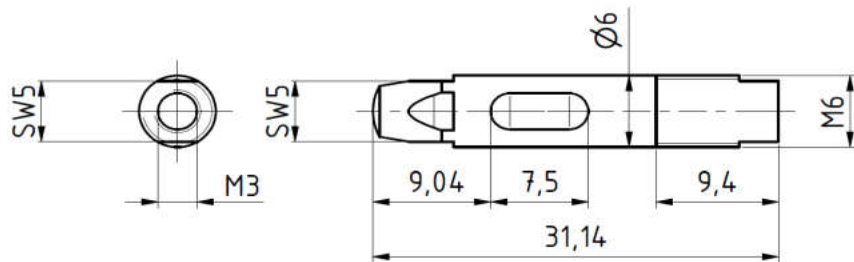
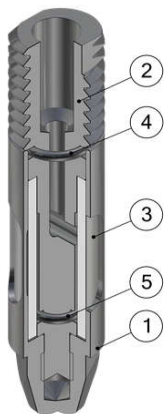
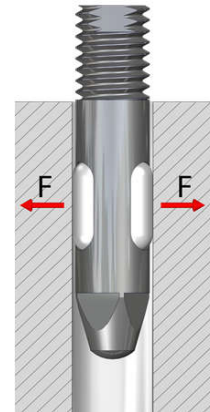
Gi 系列

- Gi004
- Gi005
- Gi006**
- Gi007
- Gi008
- Gi009
- Gi010
- Gi011
- Gi012
- Gi013
- Gi014
- Gi015
- Gi016
- Gi017
- Gi018
- Gi019
- Gi020

Internal Gripper

氣囊內孔夾具

Technical specifications	GI006
Grip force (at 6 bar) [N]	5
Bore diameter [mm]	6,1 – 7,0
Allowed component weight [kg]	0,5
Gripper weight [kg]	0.005
Compressed air connection Ø	M3
Assembly Ø	M6
Stroke cycles at ideal application conditions	500.000



Pos.	Description
1	Hull
2	Mandrel
3	Tube
4	O-Ring 1
5	O-Ring 2

Internal Gripper Ø004...

G-GI006 External diameter 6, screw thread M6

Replacement tube

EG-GI006-S for internal gripper GI006

Gi 系列

Gi004

Gi005

Gi006

Gi007

Gi008

Gi009

Gi010

Gi011

Gi012

Gi013

Gi014

Gi015

Gi016

Gi017

Gi018

Gi019

Gi020

Internal
Gripper

氣囊
內孔夾具



Operating mode:

The internal grippers dip into drillings, enlarge their external diameter by expansion of the silicone membrane, under pressure, and thus frictionally engaged hold to the bore wall. When pressure is switched off, the silicone membrane self-reliant retracts into the grippers inside due to its elastic behavior.

Advantages:

Minimum installation size possible

low gripper weight

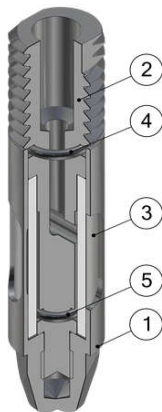
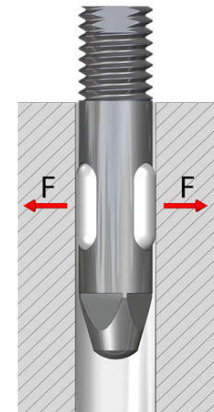
Simple gripper principle

cost-efficient

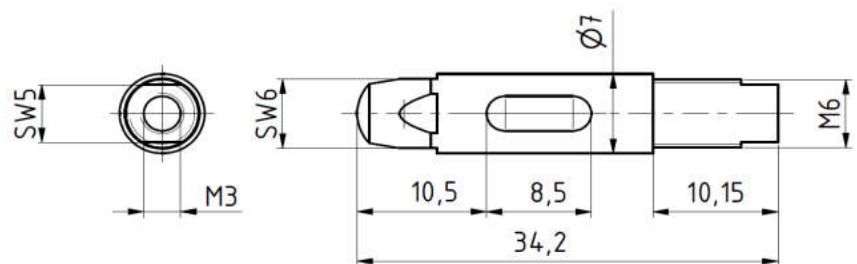
quick diaphragm replacement possible

Indirect request via pressure switch in the supply line possible

Technical specifications	GI007
Grip force (at 6 bar) [N]	7
Bore diameter [mm]	7,1 – 8,0
Allowed component weight [kg]	0,7
Gripper weight [kg]	0.007
Compressed air connection Ø	M3
Assembly Ø	M6
Stroke cycles at ideal application conditions	500.000



Pos.	Description
1	Hull
2	Mandrel
3	Tube
4	O-Ring 1
5	O-Ring 2



Internal Gripper Ø004...

G-GI007 External diameter 7, screw thread M6

Replacement tube

EG-GI007-S for internal gripper GI007

GI008 氣囊內孔夾具 Internal Gripper



Operating mode:

The internal grippers dip into drillings, enlarge their external diameter by expansion of the silicone membrane, under pressure, and thus frictionally engaged hold to the bore wall. When pressure is switched off, the silicone membrane self-reliant retracts into the grippers inside due to its elastic behavior.

Advantages:

- Minimum installation size possible
- low gripper weight
- Simple gripper principle
- cost-efficient
- quick diaphragm replacemet possible
- Indirect request via pressure switch in the supply line possible

Gi 系列

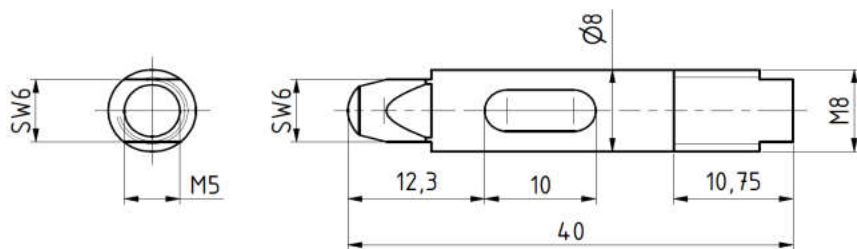
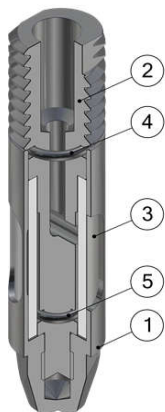
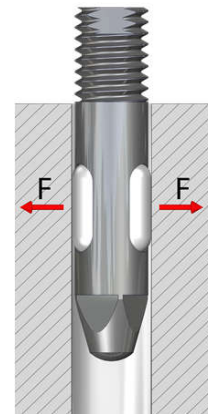
- Gi004
- Gi005
- Gi006
- Gi007
- Gi008**
- Gi009
- Gi010
- Gi011
- Gi012
- Gi013
- Gi014
- Gi015
- Gi016
- Gi017
- Gi018
- Gi019
- Gi020

Gi008

Internal Gripper

氣囊內孔夾具

Technical specifications	GI008
Grip force (at 6 bar) [N]	17
Bore diameter [mm]	8,1 – 9,0
Allowed component weight [kg]	1,7
Gripper weight [kg]	0.01
Compressed air connection Ø	M5
Assembly Ø	M8
Stroke cycles at ideal application conditions	500.000



Pos.	Description
1	Hull
2	Mandrel
3	Tube
4	O-Ring 1
5	O-Ring 2

Internal Gripper Ø004...

G-GI008 External diameter 8, screw thread M8

Replacement tube

EG-GI008-S for internal gripper GI008

Gi 系列

- Gi004
- Gi005
- Gi006
- Gi007
- Gi008
- Gi009**
- Gi010
- Gi011
- Gi012
- Gi013
- Gi014
- Gi015
- Gi016
- Gi017
- Gi018
- Gi019
- Gi020

Internal
Gripper

氣囊
內孔夾具



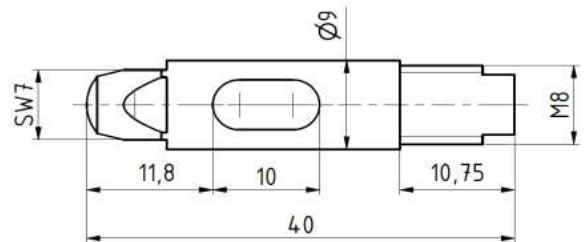
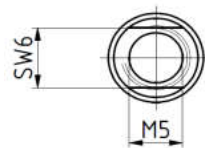
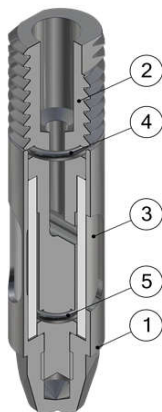
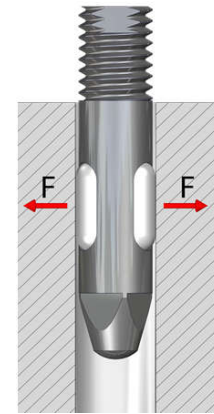
Operating mode:

The internal grippers dip into drillings, enlarge their external diameter by expansion of the silicone membrane, under pressure, and thus frictionally engaged hold to the bore wall. When pressure is switched off, the silicone membrane self-reliant retracts into the grippers inside due to its elastic behavior.

Advantages:

- Minimum installation size possible
- low gripper weight
- Simple gripper principle
- cost-efficient
- quick diaphragm replacement possible
- Indirect request via pressure switch in the supply line possible

Technical specifications	GI009
Grip force (at 6 bar) [N]	17
Bore diameter [mm]	9,1 – 10,0
Allowed component weight [kg]	1,7
Gripper weight [kg]	0.012
Compressed air connection Ø	M5
Assembly Ø	M8
Stroke cycles at ideal application conditions	500.000



Pos.	Description
1	Hull
2	Mandrel
3	Tube
4	O-Ring 1
5	O-Ring 2

Internal Gripper Ø004...

G-GI009 External diameter 9, screw thread M8

Replacement tube

EG-GI009-S for internal gripper GI009

GI010 氣囊內孔夾具

Internal Gripper



Operating mode:

The internal grippers dip into drillings, enlarge their external diameter by expansion of the silicone membrane, under pressure, and thus frictionally engaged hold to the bore wall. When pressure is switched off, the silicone membrane self-reliant retracts into the grippers inside due to its elastic behavior.

Advantages:

- Minimum installation size possible
- low gripper weight
- Simple gripper principle
- cost-efficient
- quick diaphragm replacemet possible
- Indirect request via pressure switch in the supply line possible

Gi 系列

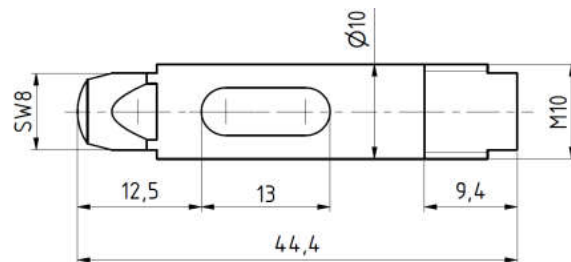
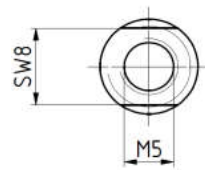
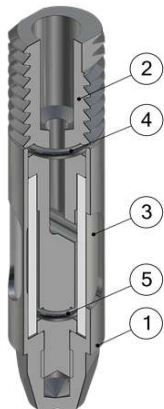
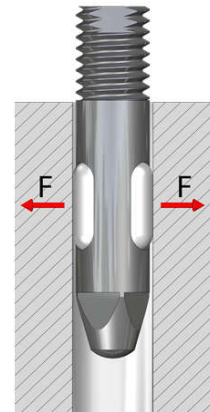
- Gi004
- Gi005
- Gi006
- Gi007
- Gi008
- Gi009
- Gi010**
- Gi011
- Gi012
- Gi013
- Gi014
- Gi015
- Gi016
- Gi017
- Gi018
- Gi019
- Gi020

Gi010

Internal Gripper

氣囊內孔夾具

Technical specifications	GI010
Grip force (at 6 bar) [N]	20
Bore diameter [mm]	10,1 – 11,0
Allowed component weight [kg]	2
Gripper weight [kg]	0.018
Compressed air connection Ø	M5
Assembly Ø	M10
Stroke cycles at ideal application conditions	500.000



Pos.	Description
1	Hull
2	Mandrel
3	Tube
4	O-Ring 1
5	O-Ring 2

Internal Gripper Ø004...

G-GI010 External diameter 10, screw thread M10

Replacement tube

EG-GI010-S for internal gripper GI010

Gi 系列

- Gi004
- Gi005
- Gi006
- Gi007
- Gi008
- Gi009
- Gi010
- Gi011**
- Gi012
- Gi013
- Gi014
- Gi015
- Gi016
- Gi017
- Gi018
- Gi019
- Gi020

Internal
Gripper

氣囊
內孔夾具



Operating mode:

The internal grippers dip into drillings, enlarge their external diameter by expansion of the silicone membrane, under pressure, and thus frictionally engaged hold to the bore wall. When pressure is switched off, the silicone membrane self-reliant retracts into the grippers inside due to its elastic behavior.

Advantages:

Minimum installation size possible

low gripper weight

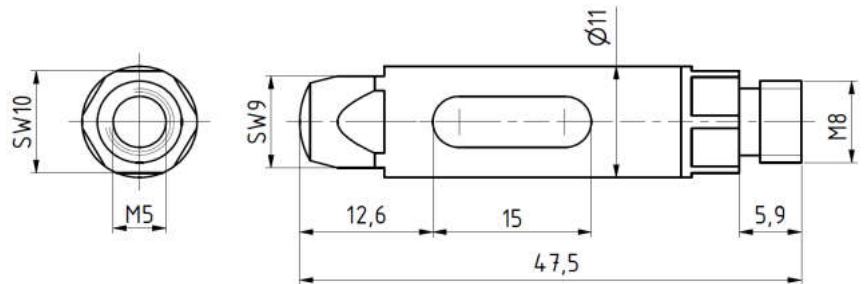
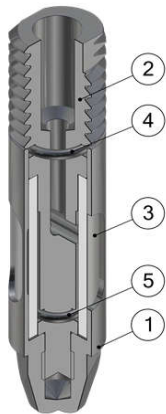
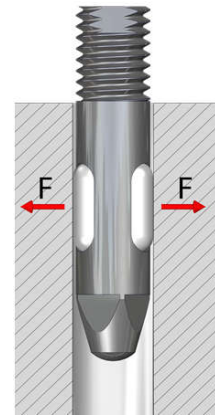
Simple gripper principle

cost-efficient

quick diaphragm replacement possible

Indirect request via pressure switch in the supply line possible

Technical specifications	GI011
Grip force (at 6 bar) [N]	25
Bore diameter [mm]	11,1 – 12,0
Allowed component weight [kg]	2,5
Gripper weight [kg]	0,022
Compressed air connection Ø	M5
Assembly Ø	M8
Stroke cycles at ideal application conditions	500.000



Pos.	Description
1	Hull
2	Mandrel
3	Tube
4	O-Ring 1
5	O-Ring 2

Internal Gripper Ø004...

G-GI011 External diameter 11, screw thread M8

Replacement tube

EG-GI011-S for internal gripper GI011

GI012 氣囊內孔夾具 Internal Gripper



Operating mode:

The internal grippers dip into drillings, enlarge their external diameter by expansion of the silicone membrane, under pressure, and thus frictionally engaged hold to the bore wall. When pressure is switched off, the silicone membrane self-reliant retracts into the grippers inside due to its elastic behavior.

Advantages:

- Minimum installation size possible
- low gripper weight
- Simple gripper principle
- cost-efficient
- quick diaphragm replacemet possible
- Indirect request via pressure switch in the supply line possible

Gi 系列

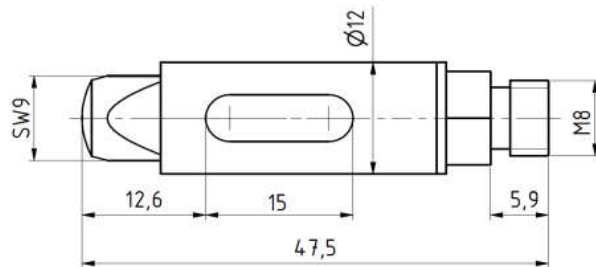
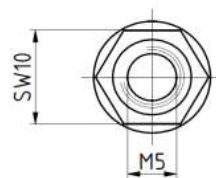
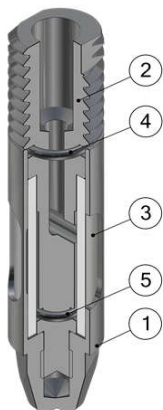
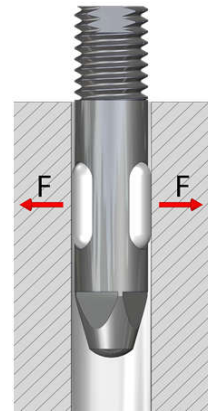
- Gi004
- Gi005
- Gi006
- Gi007
- Gi008
- Gi009
- Gi010
- Gi011
- Gi012**
- Gi013
- Gi014
- Gi015
- Gi016
- Gi017
- Gi018
- Gi019
- Gi020

Gi012

Internal Gripper

氣囊內孔夾具

Technical specifications	GI012
Grip force (at 6 bar) [N]	30
Bore diameter [mm]	12,1 – 13,5
Allowed component weight [kg]	3
Gripper weight [kg]	0,026
Compressed air connection Ø	M5
Assembly Ø	M8
Stroke cycles at ideal application conditions	500.000



Pos.	Description
1	Hull
2	Mandrel
3	Tube
4	O-Ring 1
5	O-Ring 2

Internal Gripper Ø004...

G-GI012 External diameter 12, screw thread M8

Replacement tube

EG-GI012-S for internal gripper GI012

Gi 系列

- Gi004
- Gi005
- Gi006
- Gi007
- Gi008
- Gi009
- Gi010
- Gi011
- Gi012
- Gi013**
- Gi014
- Gi015
- Gi016
- Gi017
- Gi018
- Gi019
- Gi020

Internal
Gripper

氣囊
內孔夾具



Operating mode:

The internal grippers dip into drillings, enlarge their external diameter by expansion of the silicone membrane, under pressure, and thus frictionally engaged hold to the bore wall. When pressure is switched off, the silicone membrane self-reliant retracts into the grippers inside due to its elastic behavior.

Advantages:

Minimum installation size possible

low gripper weight

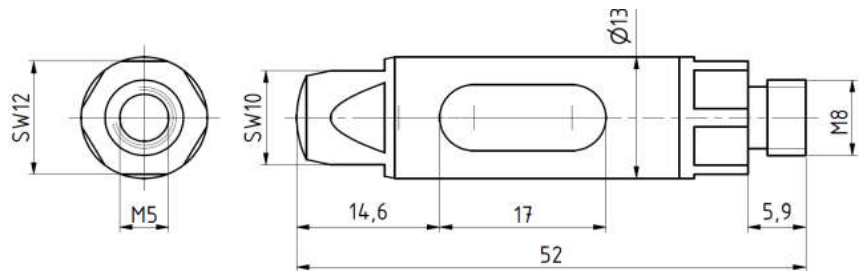
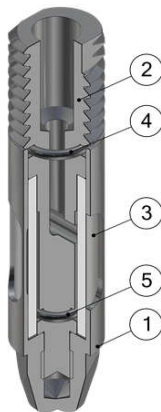
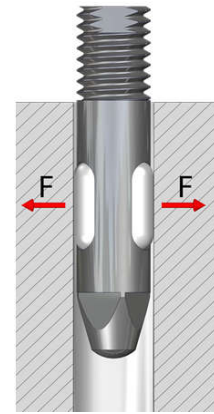
Simple gripper principle

cost-efficient

quick diaphragm replacement possible

Indirect request via pressure switch in the supply line possible

Technical specifications	GI013
Grip force (at 6 bar) [N]	40
Bore diameter [mm]	13,1 – 14,5
Allowed component weight [kg]	4
Gripper weight [kg]	0.032
Compressed air connection Ø	M5
Assembly Ø	M8
Stroke cycles at ideal application conditions	500.000



Pos.	Description
1	Hull
2	Mandrel
3	Tube
4	O-Ring 1
5	O-Ring 2

Internal Gripper Ø004...

G-GI013 External diameter 13, screw thread M8

Replacement tube

EG-GI013-S for internal gripper GI013

GI014 氣囊內孔夾具

Internal Gripper



Operating mode:

The internal grippers dip into drillings, enlarge their external diameter by expansion of the silicone membrane, under pressure, and thus frictionally engaged hold to the bore wall. When pressure is switched off, the silicone membrane self-reliant retracts into the grippers inside due to its elastic behavior.

Advantages:

- Minimum installation size possible
- low gripper weight
- Simple gripper principle
- cost-efficient
- quick diaphragm replacemet possible
- Indirect request via pressure switch in the supply line possible

Gi 系列

- Gi004
- Gi005
- Gi006
- Gi007
- Gi008
- Gi009
- Gi010
- Gi011
- Gi012
- Gi013

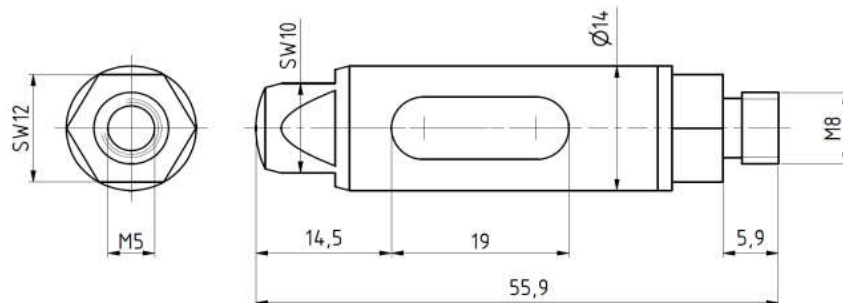
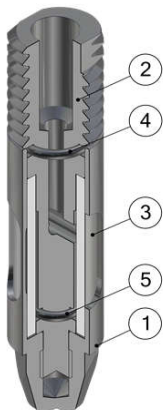
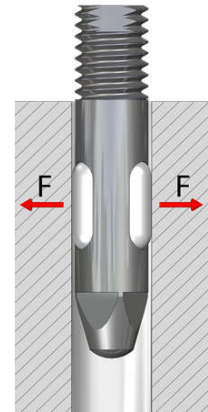
Gi014

- Gi015
- Gi016
- Gi017
- Gi018
- Gi019
- Gi020

Internal Gripper

氣囊內孔夾具

Technical specifications	GI014
Grip force (at 6 bar) [N]	45
Bore diameter [mm]	14,1 – 15,5
Allowed component weight [kg]	4,5
Gripper weight [kg]	0.04
Compressed air connection Ø	M5
Assembly Ø	M8
Stroke cycles at ideal application conditions	500.000



Pos.	Description
1	Hull
2	Mandrel
3	Tube
4	O-Ring 1
5	O-Ring 2

Internal Gripper Ø004...

G-GI014 External diameter 14, screw thread M8

Replacement tube

EG-GI014-S for internal gripper GI014

GI015 氣囊內孔夾具 Internal Gripper

Gi 系列

- Gi004
- Gi005
- Gi006
- Gi007
- Gi008
- Gi009
- Gi010
- Gi011
- Gi012
- Gi013
- Gi014

Gi015

- Gi016
- Gi017
- Gi018
- Gi019
- Gi020

Internal
Gripper

氣囊
內孔夾具



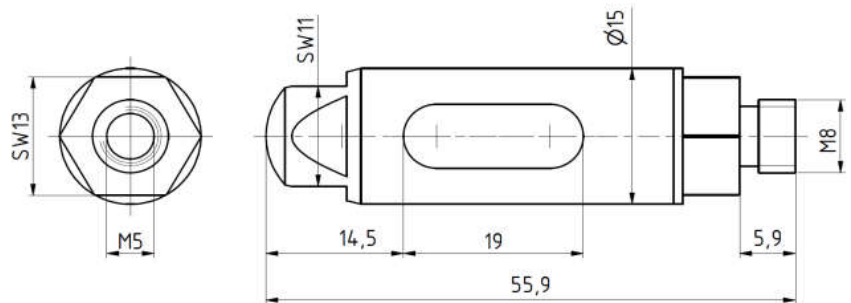
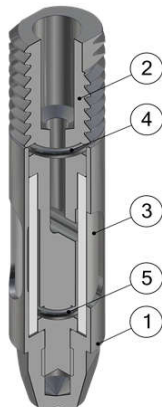
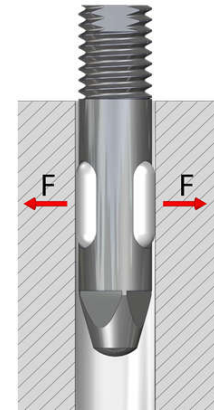
Operating mode:

The internal grippers dip into drillings, enlarge their external diameter by expansion of the silicone membrane, under pressure, and thus frictionally engaged hold to the bore wall. When pressure is switched off, the silicone membrane self-reliant retracts into the grippers inside due to its elastic behavior.

Advantages:

- Minimum installation size possible
- low gripper weight
- Simple gripper principle
- cost-efficient
- quick diaphragm replacemet possible
- Indirect request via pressure switch in the supply line possible

Technical specifications	GI015
Grip force (at 6 bar) [N]	45
Bore diameter [mm]	15,1 – 16,5
Allowed component weight [kg]	4,5
Gripper weight [kg]	0.046
Compressed air connection Ø	M5
Assembly Ø	M8
Stroke cycles at ideal application conditions	500.000



Pos.	Description
1	Hull
2	Mandrel
3	Tube
4	O-Ring 1
5	O-Ring 2

Internal Gripper Ø004...

G-GI015 External diameter 15, screw thread M8

Replacement tube

EG-GI015-S for internal gripper GI015

GI016 氣囊內孔夾具 Internal Gripper



Operating mode:

The internal grippers dip into drillings, enlarge their external diameter by expansion of the silicone membrane, under pressure, and thus frictionally engaged hold to the bore wall. When pressure is switched off, the silicone membrane self-reliant retracts into the grippers inside due to its elastic behavior.

Advantages:

- Minimum installation size possible
- low gripper weight
- Simple gripper principle
- cost-efficient
- quick diaphragm replacemet possible
- Indirect request via pressure switch in the supply line possible

Gi 系列

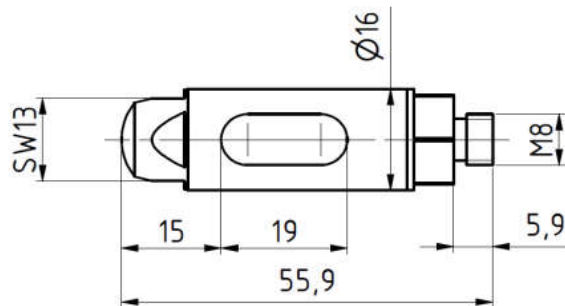
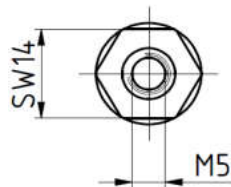
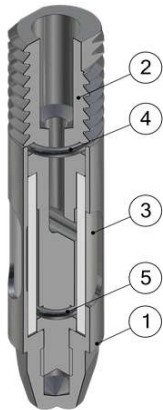
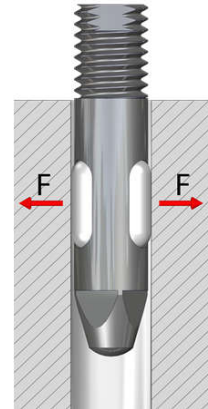
- Gi004
- Gi005
- Gi006
- Gi007
- Gi008
- Gi009
- Gi010
- Gi011
- Gi012
- Gi013
- Gi014
- Gi015
- Gi016**
- Gi017
- Gi018
- Gi019
- Gi020

Gi016

Internal Gripper

氣囊內孔夾具

Technical specifications	GI016
Grip force (at 6 bar) [N]	50
Bore diameter [mm]	16,1 – 17,5
Allowed component weight [kg]	5
Gripper weight [kg]	0.054
Compressed air connection Ø	M5
Assembly Ø	M8
Stroke cycles at ideal application conditions	500.000



Pos.	Description
1	Hull
2	Mandrel
3	Tube
4	O-Ring 1
5	O-Ring 2

Internal Gripper Ø004...

G-GI016 External diameter 16, screw thread M8

Replacement tube

EG-GI016-S for internal gripper GI016

Gi 系列

Gi004
Gi005
Gi006
Gi007
Gi008
Gi009
Gi010
Gi011
Gi012
Gi013
Gi014
Gi015
Gi016

Gi017

Gi018
Gi019
Gi020

Internal
Gripper

氣囊
內孔夾具



Operating mode:

The internal grippers dip into drillings, enlarge their external diameter by expansion of the silicone membrane, under pressure, and thus frictionally engaged hold to the bore wall. When pressure is switched off, the silicone membrane self-reliant retracts into the grippers inside due to its elastic behavior.

Advantages:

Minimum installation size possible

low gripper weight

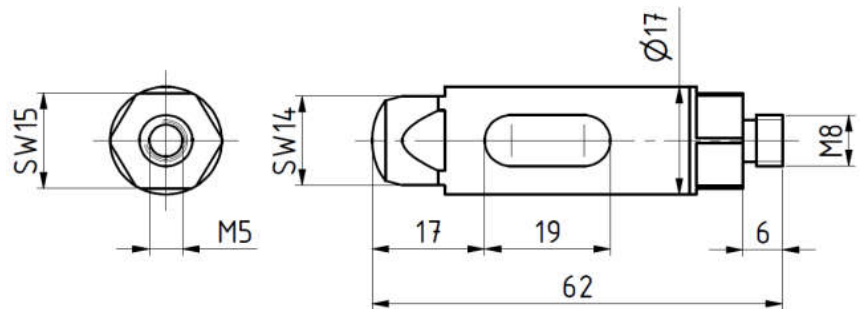
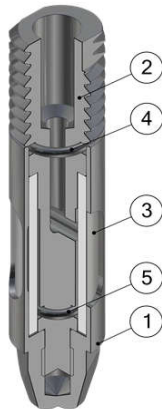
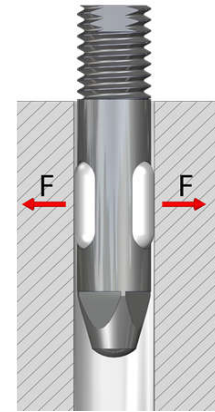
Simple gripper principle

cost-efficient

quick diaphragm replacement possible

Indirect request via pressure switch in the supply line possible

Technical specifications	GI017
Grip force (at 6 bar) [N]	50
Bore diameter [mm]	17,1 – 18,5
Gross vehicle component weight [kg]	5
Gripper weight [kg]	0.07
Compressed air connection Ø	M5
Assembly Ø	M8
Stroke cycles at ideal application conditions	500.000



Pos.	Description
1	Hull
2	Mandrel
3	Tube
4	O-Ring 1
5	O-Ring 2

Internal Gripper Ø004...

G-GI017 External diameter 17, screw thread M8

Replacement tube

EG-GI017-S for internal gripper GI017

GI018 氣囊內孔夾具 Internal Gripper



Operating mode:

The internal grippers dip into drillings, enlarge their external diameter by expansion of the silicone membrane, under pressure, and thus frictionally engaged hold to the bore wall. When pressure is switched off, the silicone membrane self-reliant retracts into the grippers inside due to its elastic behavior.

Advantages:

- Minimum installation size possible
- low gripper weight
- Simple gripper principle
- cost-efficient
- quick diaphragm replacemet possible
- Indirect request via pressure switch in the supply line possible

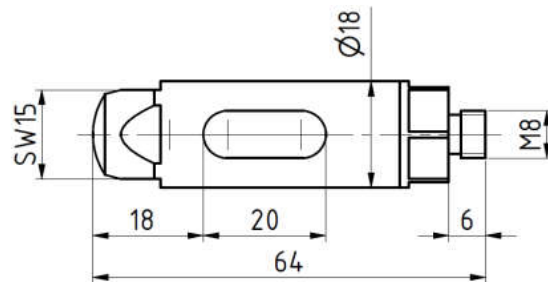
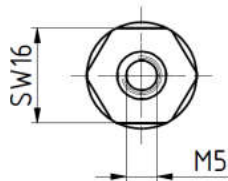
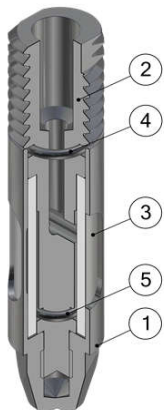
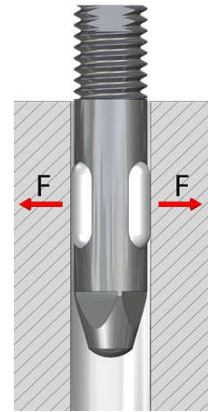
Gi 系列

- Gi004
- Gi005
- Gi006
- Gi007
- Gi008
- Gi009
- Gi010
- Gi011
- Gi012
- Gi013
- Gi014
- Gi015
- Gi016
- Gi017
- Gi018**
- Gi019
- Gi020

Internal Gripper

氣囊內孔夾具

Technical specifications	GI018
Grip force (at 6 bar) [N]	50
Bore diameter [mm]	18,1 – 19,5
Allowed component weight [kg]	5
Gripper weight [kg]	0.084
Compressed air connection Ø	M5
Assembly Ø	M8
Stroke cycles at ideal application conditions	500.000



Pos.	Description
1	Hull
2	Mandrel
3	Tube
4	O-Ring 1
5	O-Ring 2

Internal Gripper Ø004...

G-GI018 External diameter 18, screw thread M8

Replacement tube

EG-GI018-S for internal gripper GI018

Gi 系列

Gi004
Gi005
Gi006
Gi007
Gi008
Gi009
Gi010
Gi011
Gi012
Gi013
Gi014
Gi015
Gi016
Gi017
Gi018

Gi019

Gi020

Internal
Gripper

氣囊
內孔夾具



Operating mode:

The internal grippers dip into drillings, enlarge their external diameter by expansion of the silicone membrane, under pressure, and thus frictionally engaged hold to the bore wall. When pressure is switched off, the silicone membrane self-reliant retracts into the grippers inside due to its elastic behavior.

Advantages:

Minimum installation size possible

low gripper weight

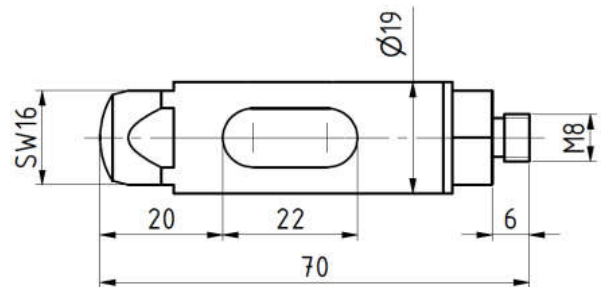
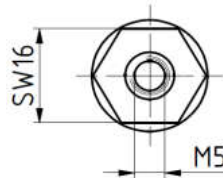
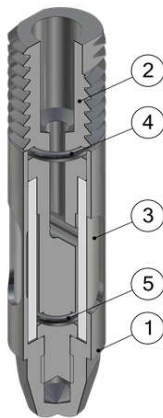
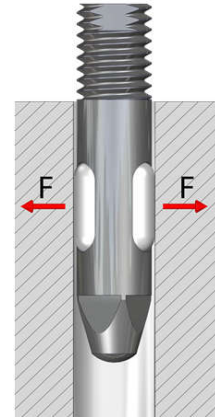
Simple gripper principle

cost-efficient

quick diaphragm replacemet possible

Indirect request via pressure switch in the supply line possible

Technical specifications	GI019
Grip force (at 6 bar) [N]	60
Bore diameter [mm]	19,1 – 21,0
Allowed component weight [kg]	6
Gripper weight [kg]	0.102
Compressed air connection Ø	M5
Assembly Ø	M8
Stroke cycles at ideal application conditions	500.000



Pos.	Description
1	Hull
2	Mandrel
3	Tube
4	O-Ring 1
5	O-Ring 2

Internal Gripper Ø004...

G-GI019 External diameter 19, screw thread M8

Replacement tube

EG-GI019-S for internal gripper GI019

GI020 氣囊內孔夾具 Internal Gripper



Operating mode:

The internal grippers dip into drillings, enlarge their external diameter by expansion of the silicone membrane, under pressure, and thus frictionally engaged hold to the bore wall. When pressure is switched off, the silicone membrane self-reliant retracts into the grippers inside due to its elastic behavior.

Advantages:

- Minimum installation size possible
- low gripper weight
- Simple gripper principle
- cost-efficient
- quick diaphragm replacemet possible
- Indirect request via pressure switch in the supply line possible

Gi 系列

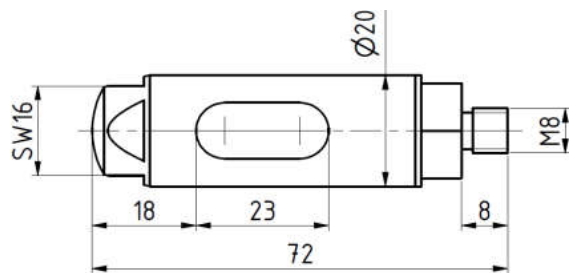
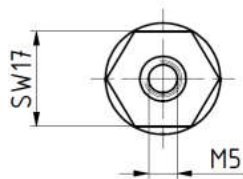
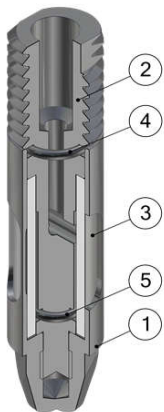
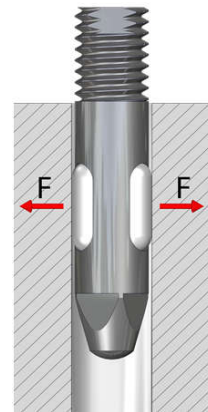
- Gi004
- Gi005
- Gi006
- Gi007
- Gi008
- Gi009
- Gi010
- Gi011
- Gi012
- Gi013
- Gi014
- Gi015
- Gi016
- Gi017
- Gi018
- Gi019

Gi020

Internal Gripper

氣囊內孔夾具

Technical specifications	GI020
Grip force (at 6 bar) [N]	60
Bore diameter [mm]	20,1 – 21,5
Allowed component weight [kg]	6
Gripper weight [kg]	0.114
Compressed air connection Ø	M5
Assembly Ø	M8
Stroke cycles at ideal application conditions	500.000



Pos.	Description
1	Hull
2	Mandrel
3	Tube
4	O-Ring 1
5	O-Ring 2

Internal Gripper Ø004...

G-GI020 External diameter 20, screw thread M8

Replacement tube

EG-GI020-S for internal gripper GI020