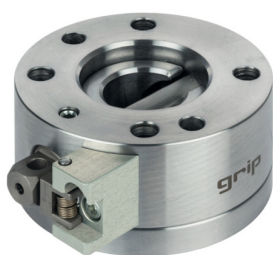
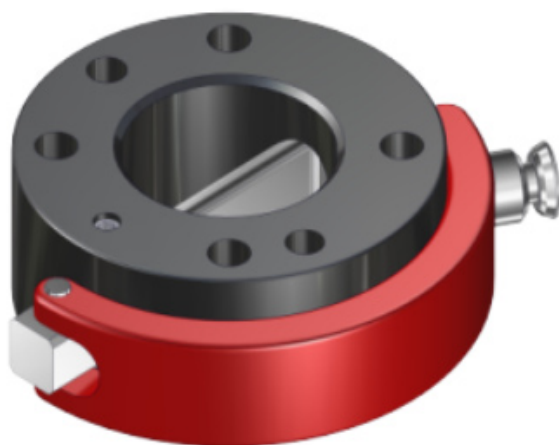


# grip 工業機器人周邊部件



EXCHANGE  
工業機器人手動快速換模系統

MGW  
SHW  
SWA  
SWS

手動  
快速  
換模  
系列

Quick-  
Change-  
System

Gi  
GiS  
GP  
GZ

Internal  
Gripper  
&  
Gripper

氣囊  
內孔夾持  
&  
氣壓夾爪

DDF  
MEK  
SEK

Swivel  
&  
Energy  
Coupling

氣壓  
旋轉接頭  
&  
氣/電  
快速連接器



### MGW 手動氣壓夾爪快速換模系統 Manual Gripper Changing System

- 規格：6種
- 不需要工具就可拆和裝
- 承受低重量的高負載
- 5,000次更換週期壽命
- 符合DIN EN ISO 9409-1的連接端面
- 最高承受荷重：10 ~ 120Kg

03~09頁



### SHW 推力槓桿換模系統 Thrust Lever-Changing System

- 規格：5種
- 承受低重量的高負載
- 重複精度：±0.02mm
- 50,000次更換週期壽命
- 符合DIN EN ISO 9409-1的連接端面
- 最高承受荷重：12 ~ 75Kg
- 不需要工具就可拆和裝

10~15頁



### SWA換模連接系統 Quick-Change-Adapter

- 規格：6種
- 重複精度：±0.02mm
- 承受低重量的高負載
- 50,000次更換週期壽命
- 符合DIN EN ISO 9409-1的連接端面
- 最高承受荷重：8 ~ 62Kg

16~22頁



### SWS 快速換模系統 Quick-Change-System

- 規格：9種
- 重複精度：±0.02mm
- 承受低重量的高負載
- 50,000次更換週期壽命
- 符合DIN EN ISO 9409-1的連接端面
- 最高承受荷重：14 ~ 200Kg

24~33頁

### 氣壓內孔夾具 Internal Gripper & 氣壓夾爪 Gripper

Gi 氣囊內孔夾具  
4~20mm



GiS 氣囊內孔夾具  
5~20mm



GP 氣壓平行夾爪



GZ 氣壓夾爪  
Y型(60度)



### 氣壓旋轉接頭 Multiport Swivel & 氣/真空和電信號-快速連接器 Multi-Energy-Coupling

DDF 空氣4通道  
旋轉接頭



MEK 氣/電  
快速連接器

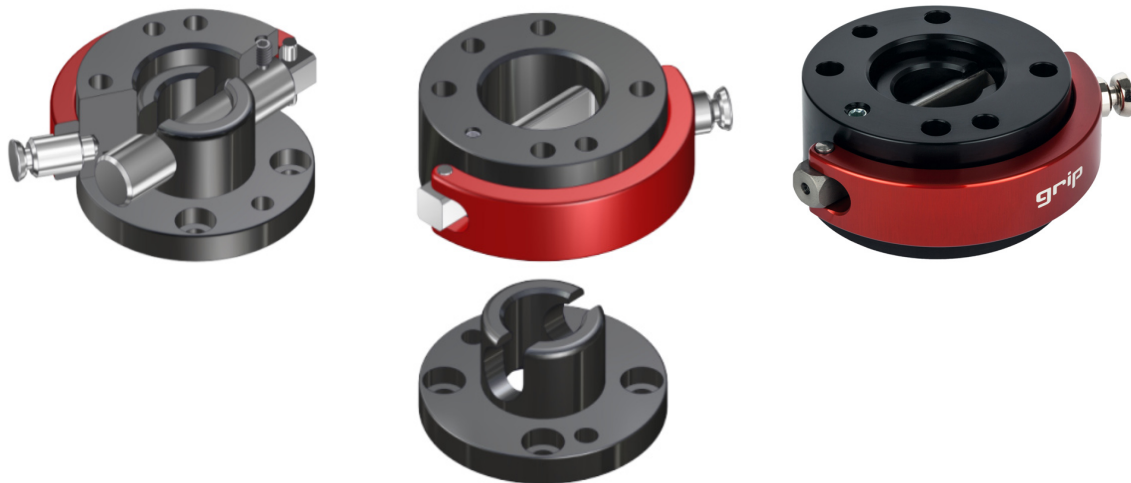


SEK 氣/電  
快速連接器



# MGH 夾爪快速換模系統

Manual Gripper Changing System



## MGW 夾爪快速換模系列

- MGW050
- MGW063
- MGW080
- MGW100
- MGW125
- MGW160

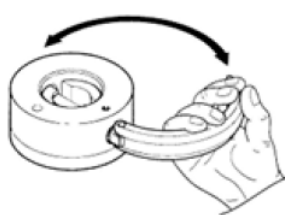
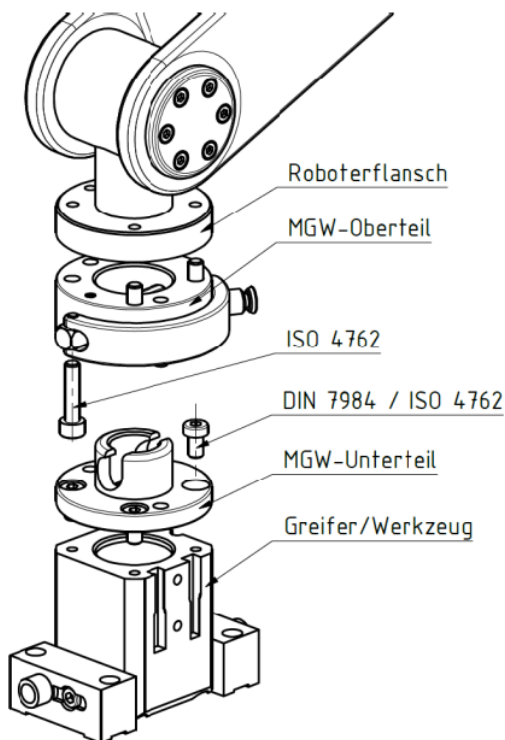
Manual Gripper Changing System

**操作模式：**通過半圓柱形螺栓旋轉180° 不需要工具就可拆和裝

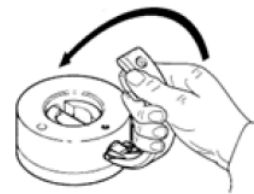
**優點：**

- 規格：6種
- 由高強度鋁製成，重量輕，陽極氧化
- 5,000次更換週期壽命
- 彈性鎖定銷將手柄固定在獨立釋放位置
- 最高承受荷重：10 ~ 120Kg
- 承受低重量的高負載
- 符合DIN EN ISO 9409-1的連接端面
- 可根據客戶的要求設計

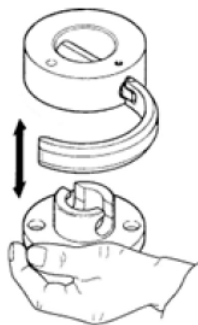
### MGW 拆/裝方式和步驟



Unfold hand lever max. 90°



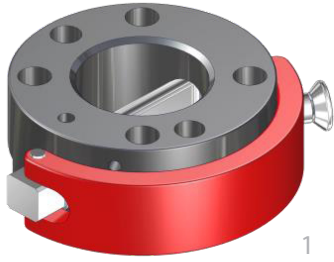
Turn hand lever by 180°



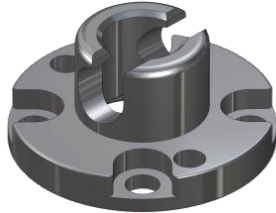
pull off upper and lower part

版權所有：上海懿耀氣動科技有限公司 021-6819 8501~2 E-mail: info@acedanyao-hd.com

◎ 目錄上所有的功能尺寸及公差僅供參考，本公司保有變更之權力並不事先通知。◎ 如有任何疑問請洽本公司。



1



2

#### Operating mode:

By rotating the semi-cylindrical bolt by 180° the upper part (1) and the lower part (2) are braced in a form-closed manner

#### Advantages:

Withstands high loads with low dead weight

Can be released and closed with one handle

High repeatability +/- 0.02 mm

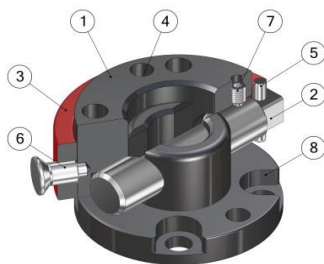
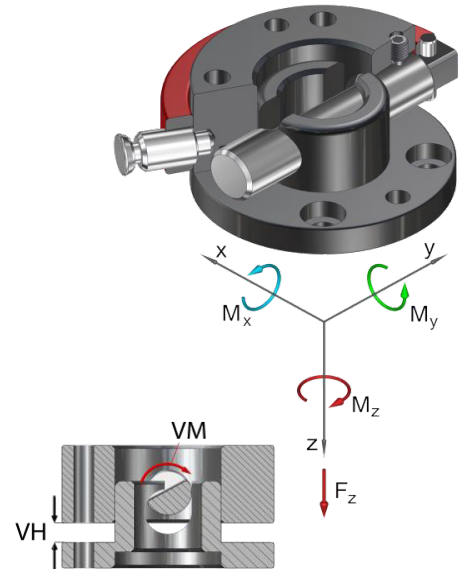
Resilient locking pin secures hand lever against independent releasing

holds up to 5.000 changing cycles

During locking, the lower part is pulled around the locking stroke

Interface acc. to DIN EN ISO 9409-1

Technical specifications		MGW050		
Basic material		Al. anod.	VA	St, nitrated
External diameter x Height [mm]		50 x 30		
Pitch circle diameter [mm]		40		
Repeatability +/- [mm]		0,02		
Tension Fz [N]		700	1.100	1.320
Compressive -Fz [kN]		48	72	96
Torsion Mz [Nm]		40	60	78
Bend Mx, My [Nm]		50	70	80
Mass [kg]	upper part	0,14	0,28	
	lower part	0,05	0,13	
Recommended load [kg]		10	14	16
Locking moment VM [Nm]		1 - 4	2 - 6	
Locking stroke VH [mm]		0 - 5		



Pos.	Description
1	Upper part
2	Semi-cylindrical bolt
3	Hand lever
4	Index pin
5	Cylinder bolt
6	Spring locking pin
7	Setscrew
8	Lower part

#### Manual Gripper Changing System Ø50...

G-MGW050-20	drilled acc. to ISO, upper part, Al, anodized
G-MGW050-20-N	drilled acc. to ISO, upper part, steel, nitrated
G-MGW050-20-V	drilled acc. to ISO, upper part, VA
G-MGW050-2U	drilled acc. to ISO, lower part, Al, anodized
G-MGW050-2U-N	drilled acc. to ISO, lower part, steel, nitrated
G-MGW050-2U-V	drilled acc. to ISO, lower part, VA

#### Replacement semi-cylindrical bolt...

EG-MGW050-HB	for MGW050
EG-MGW050-HB-VA	for MGW050, out off VA

#### Replacement hand lever

EG-MGW050-HH	for MGW050
--------------	------------



# MGH063 夾爪快速換模系統



## Manual Gripper Changing System



### Operating mode:

By rotating the semi-cylindrical bolt by 180° the upper part (1) and the lower part (2) are braced in a form-closed manner

### Advantages:

Withstands high loads with low dead weight

Can be released and closed with one handle

High repeatability +/- 0.02 mm

Resilient locking pin secures hand lever against independent releasing

Optional connection of a power coupling MEK for electr. and pneum.

### Implementations

holds up to 5.000 changing cycles

During locking, the lower part is pulled around the locking stroke

Interface acc. to DIN EN ISO 9409-1

## MGH 夾爪快速換模系列

MGW050

## MGW063

MGW080

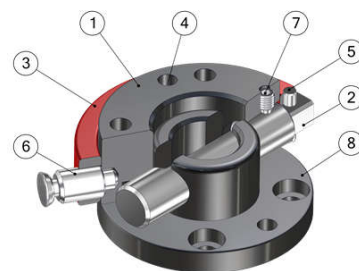
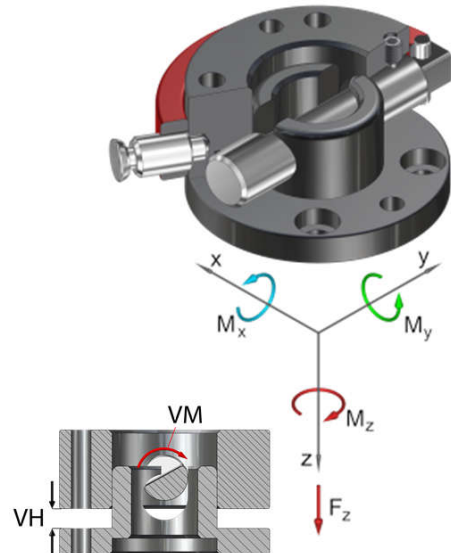
MGW100

MGW125

MGW160

## Manual Gripper Changing System

Technical specifications		MGW063		
Basic material		Al. anod.	VA	St, nitrated
External diameter x Height [mm]		63 x 32		
Pitch circle diameter [mm]		50		
Repeatability +/- [mm]		0,02		
Tension Fz [N]		900	1.500	1.800
Compressive -Fz [kN]		89	134	178
Torsion Mz [Nm]		60	80	105
Bend Mx, My [Nm]		70	100	115
Mass [kg]	upper part	0,26	0,48	
	lower part	0,08	0,23	
Recommended load [kg]		16	20	22
Locking moment VM [Nm]		1,5 - 5	3 - 8	
Locking stroke VH [mm]		0 - 6		



### Description

Pos.	Upper part
1	Upper Part
2	Hand lever
3	Hand Lever
4	Index pin
5	Cylinder bolt
6	Spring locking pin
7	Setscrew
8	Lower part

### Manual Gripper Changing System Ø63...

G-MGW063-2O	drilled acc. to ISO, upper part, Al, anodized
G-MGW063-2OE	drilled acc. to ISO, upper part, E-Mounting, Al, anodized
G-MGW063-2OEN	drilled acc. to ISO, upper part, E-Mounting, steel, nitrated
G-MGW063-2O-N	drilled acc. to ISO, upper part, steel, nitrated
G-MGW063-2O-V	drilled acc. to ISO, upper part, VA
G-MGW063-2U	drilled acc. to ISO, lower part, Al, anodized
G-MGW063-2UE	drilled acc. to ISO, lower part, E-Mounting, Al, anodized
G-MGW063-2UEN	drilled acc. to ISO, lower part, E-Mounting, steel, nitrated
G-MGW063-2U-N	drilled acc. to ISO, lower part, steel, nitrated
G-MGW063-2U-V	drilled acc. to ISO, lower part, VA

### Replacement semi-cylindrical bolt...

EG-MGW063-HB	for MGW063
EG-MGW063-HB-VA	for MGW063, out off VA

### Replacement hand lever

EG-MGW063-HH	for MGW063
--------------	------------

## MGH 夾爪快速換模系列

MGW050

MGW063

## MGW080

MGW100

MGW125

MGW160

Manual Gripper Changing System



1



2

#### Operating mode:

By rotating the semi-cylindrical bolt by 180° the upper part (1) and the lower part (2) are braced in a form-closed manner

#### Advantages:

Withstands high loads with low dead weight

Can be released and closed with one handle

High repeatability +/- 0.02 mm

Resilient locking pin secures hand lever against independent releasing

Optional connection of a power coupling MEK for electr. and pneum.

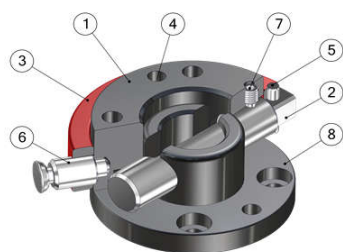
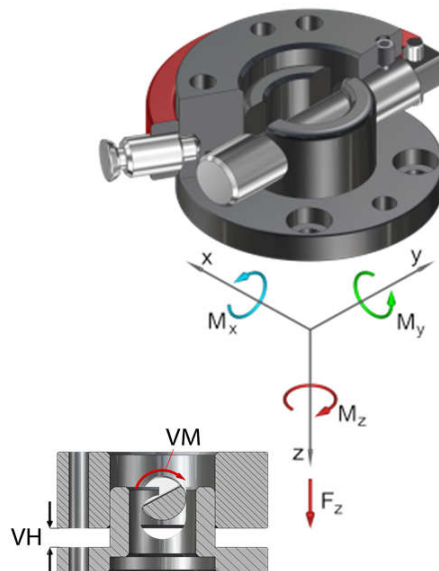
#### Implementations

holds up to 5.000 changing cycles

During locking, the lower part is pulled around the locking stroke

Interface acc. to DIN EN ISO 9409-1

Technical specifications		MGW080	
Basic material		Al. anod.	St, nitriert
External diameter x Height [mm]		80 x 37	
Pitch circle diameter [mm]		63	
Repeatability +/- [mm]		0,02	
Tension Fz [N]		1.000	3.000
Compressive -Fz [kN]		157	313
Torsion Mz [Nm]		80	120
Bend Mx, My [Nm]		100	160
Mass [kg]	upper part	0,45	0,92
	lower part	0,15	0,5
Recommended load [kg]		20	28
Locking moment VM [Nm]		1,5 - 6	3 - 9
Locking stroke VH [mm]		0 - 8	



Pos.	Description
1	Upper part
2	semi-cylindrical bolt
3	Hand lever
4	Index pin
5	Cylinder bolt
6	Spring locking pin
7	Setscrew
8	Lower part

#### Manual Gripper Changing System Ø80...

G-MGW080-20	drilled acc. to ISO, upper part, Al, anodized
G-MGW080-20E	drilled acc. to ISO, upper part, E-Mounting, Al, anodized
G-MGW080-20EN	drilled acc. to ISO, upper part, E-Mounting, steel, nitrated
G-MGW080-20-N	drilled acc. to ISO, upper part, steel, nitrated
G-MGW080-2U	drilled acc. to ISO, lower part, Al, anodized
G-MGW080-2UE	drilled acc. to ISO, lower part, E-Mounting, Al, anodized
G-MGW080-2UEN	drilled acc. to ISO, lower part, E-Mounting, steel, nitrated
G-MGW080-2U-N	drilled acc. to ISO, lower part, steel, nitrated

#### Replacement semi-cylindrical bolt...

EG-MGW080-HB	for MGW080
EG-MGW080-HB-VA	for MGW080, ou off VA

#### Replacement hand lever

EG-MGW080-HH	for MGW080
--------------	------------

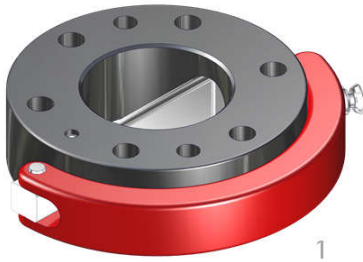
© 目錄上所有的功能尺寸及公差僅供參考，本公司保有變更之權力並不事先通知。 ● 請有任何疑問或特殊需求請洽詢本公司。 ●

版权所有：上海醒耀氣動科技有限公司 021-6819 8501 ~ 2 E-mail: info@acedanyao.com

# MGH100 夾爪快速換模系統



## Manual Gripper Changing System



1



2

### Operating mode:

By rotating the semi-cylindrical bolt by 180° the upper part (1) and the lower part (2) are braced in a form-closed manner

### Advantages:

Withstands high loads with low dead weight

Can be released and closed with one handle

High repeatability +/- 0.02 mm

Resilient locking pin secures hand lever against independent releasing

Optional connection of a power coupling MEK for electr. and pneum.

### Implementations

holds up to 5.000 changing cycles

During locking, the lower part is pulled around the locking stroke

Interface acc. to DIN EN ISO 9409-1

## MGH 夾爪快速換模系列

MGW050

MGW063

MGW080

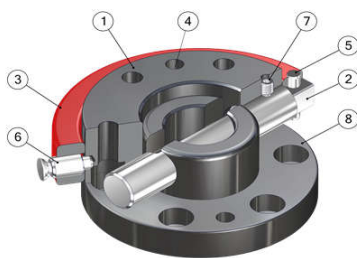
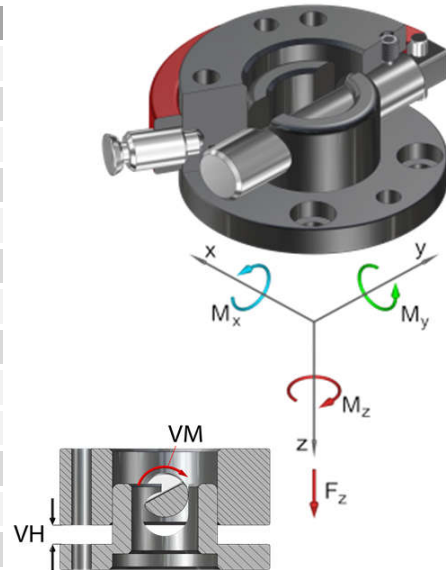
## MGW100

MGW125

MGW160

Manual Gripper Changing System

Technical specifications		MGW100	
Basic material		Al. anod.	St, nitriert
External diameter x Height [mm]		100 x 45	
Pitch circle diameter [mm]		80	
Repeatability +/- [mm]		0,02	
Tension Fz [N]		1.200	4.200
Compressive -Fz [kN]		219	439
Torsion Mz [Nm]		110	185
Bend Mx, My [Nm]		130	205
Mass [kg]	upper part	0,74	1,53
	lower part	0,35	1,01
Recommended load [kg]		28	39
Locking moment VM [Nm]		2 - 10	3 - 14
Locking stroke VH [mm]		0 - 8	



Pos.	Description
1	Upper part
2	semi-cylindrical bolt
3	Hand lever
4	Index pin
5	Cylinder bolt
6	Spring locking pin
7	Setscrew
8	Lower part

### Manual Gripper Changing System Ø100...

G-MGW100-20	drilled acc. to ISO, upper part, Al, anodized
G-MGW100-20E	drilled acc. to ISO, upper part, E-Mounting, Al, anodized
G-MGW100-20EN	drilled acc. to ISO, upper part, E-Mounting, steel, nitrated
G-MGW100-20-N	drilled acc. to ISO, upper part, steel, nitrated
G-MGW100-2U	drilled acc. to ISO, lower part, Al, anodized
G-MGW100-2UE	drilled acc. to ISO, lower part, E-Mounting, Al, anodized
G-MGW100-2UEN	drilled acc. to ISO, lower part, E-Mounting, steel, nitrated
G-MGW100-2U-N	drilled acc. to ISO, lower part, steel, nitrated

### Replacement semi-cylindrical bolt...

EG-MGW100-HB	for MGW100
EG-MGW100-HB-VA	for MGW100, out off VA

### Replacement hand lever

EG-MGW100-HH	for MGW100
--------------	------------

## MGH 快速換模系列

MGW050

MGW063

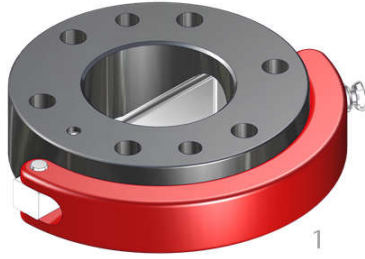
MGW080

MGW100

## MGW125

MGW160

Manual Gripper Changing System



#### Operating mode:

By rotating the semi-cylindrical bolt by 180° the upper part (1) and the lower part (2) are braced in a form-closed manner

#### Advantages:

Withstands high loads with low dead weight

Can be released and closed with one handle

High repeatability +/- 0.02 mm

Resilient locking pin secures hand lever against independent releasing

Optional connection of a power coupling MEK for electr. and pneum.

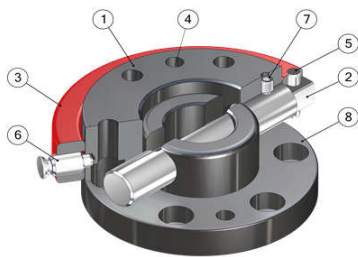
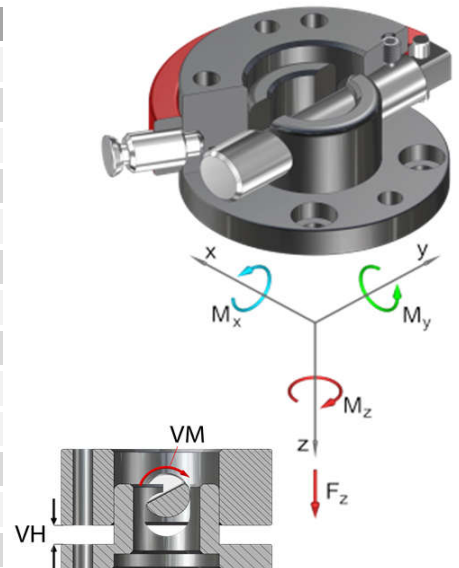
#### Implementations

holds up to 5.000 changing cycles

During locking, the lower part is pulled around the locking stroke

Interface acc. to DIN EN ISO 9409-1

Technical specifications		MGW125	
Basic material		Al. anod.	St, nitriert
External diameter x Height [mm]		125 x 50	
Pitch circle diameter [mm]		100	
Repeatability +/- [mm]		0,02	
Tension Fz [N]		1.500	5.200
Compressive -Fz [kN]		377	754
Torsion Mz [Nm]		150	210
Bend Mx, My [Nm]		180	250
Mass [kg]	upper part	1,3	2,8
	lower part	0,55	1,6
Recommended load [kg]		40	55
Locking moment VM [Nm]		2 - 16	3 - 20
Locking stroke VH [mm]		0 - 8	



Pos.	Description
1	Upper part
2	semi-cylindrical bolt
3	Hand lever
4	Index pin
5	Cylinder bolt
6	Spring locking pin
7	Setscrew
8	Lower part

#### Manual Gripper Changing System Ø125...

G-MGW125-20	drilled acc. to ISO, upper part, Al, anodized
G-MGW125-20E	drilled acc. to ISO, upper part, E-Mounting, Al, anodized
G-MGW125-20EN	drilled acc. to ISO, upper part, E-Mounting, steel, nitrated
G-MGW125-20-N	drilled acc. to ISO, upper part, steel, nitrated
G-MGW125-2U	drilled acc. to ISO, lower part, Al, anodized
G-MGW125-2UE	drilled acc. to ISO, lower part, E-Mounting, Al, anodized
G-MGW125-2UEN	drilled acc. to ISO, lower part, E-Mounting, steel, nitrated
G-MGW125-2U-N	drilled acc. to ISO, lower part, steel, nitrated

#### Replacement semi-cylindrical bolt...

EG-MGW125-HB	for MGW125
EG-MGW125-HB-VA	for MGW125, out off VA

#### Replacement hand lever

EG-MGW125-HH	for MGW125
--------------	------------

© 目錄上所有的功能尺寸及公差僅供參考，本公司保有變更之權力並不事先通知。 ● 請有任何疑問與特殊需求請洽詢本公司。



# MGH160 夾爪快速換模系統

## Manual Gripper Changing System

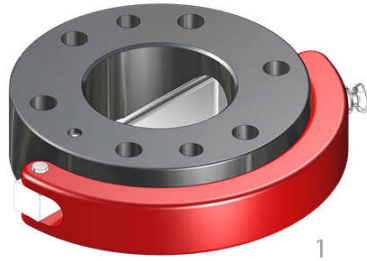


### MGH 快速換模 系列

- MGW050
- MGW063
- MGW080
- MGW100
- MGW125

### MGW160

Manual  
Gripper  
Changing  
System



1



2

#### Operating mode:

By rotating the semi-cylindrical bolt by 180° the upper part (1) and the lower part (2) are braced in a form-closed manner

#### Advantages:

Withstands high loads with low dead weight

Can be released and closed with one handle

High repeatability +/- 0.02 mm

Resilient locking pin secures hand lever against independent releasing

Optional connection of a power coupling MEK for electr. and pneum.

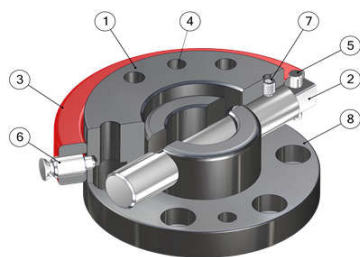
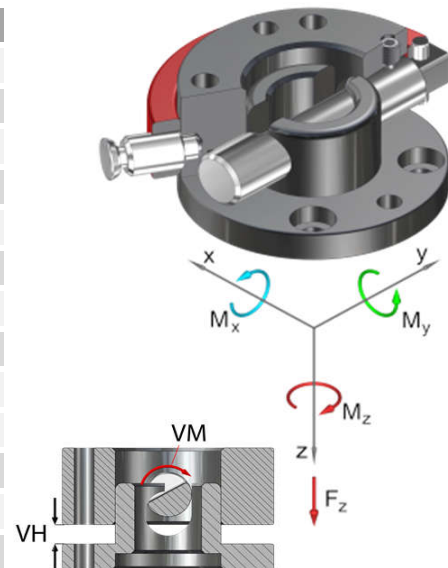
#### Implementations

holds up to 5.000 changing cycles

During locking, the lower part is pulled around the locking stroke

Interface acc. to DIN EN ISO 9409-1

Technical specifications		MGW160	
Basic material		Al. anod.	St, nitriert
External diameter x Height [mm]		160 x 70	
Pitch circle diameter [mm]		125	
Repeatability +/- [mm]		0,02	
Tension Fz [N]		2.500	10.000
Compressive -Fz [kN]		626	1.252
Torsion Mz [Nm]		250	1.000
Bend Mx, My [Nm]		320	1.000
Mass [kg]	upper part	2,8	6,6
	lower part	1,3	3,85
Recommended load [kg]		75	120
Locking moment VM [Nm]		3 - 24	4 - 30
Locking stroke VH [mm]		0 - 10	



Pos.	Description
1	Upper part
2	semi-cylindrical bolt
3	Hand lever
4	Index pin
5	Cylinder bolt
6	Spring locking pin
7	Setscrew
8	Lower part

#### Manual Gripper Changing System Ø160...

G-MGW160-20	drilled acc. to ISO, upper part, Al, anodized
G-MGW160-20E	drilled acc. to ISO, upper part, E-Mounting, Al, anodized
G-MGW160-20EN	drilled acc. to ISO, upper part, E-Mounting, steel, nitrated
G-MGW160-20-N	drilled acc. to ISO, upper part, steel, nitrated
G-MGW160-2U	drilled acc. to ISO, lower part, Al, anodized
G-MGW160-2UE	drilled acc. to ISO, lower part, E-Mounting, Al, anodized
G-MGW160-2UEN	drilled acc. to ISO, lower part, E-Mounting, steel, nitrated
G-MGW160-2U-N	drilled acc. to ISO, lower part, steel, nitrated

#### Replacement semi-cylindrical bolt...

EG-MGW160-HB	for MGW160
EG-MGW160-HB-VA	for MGW160, out off VA

#### Replacement hand lever

EG-MGW160-HH	for MGW160
--------------	------------