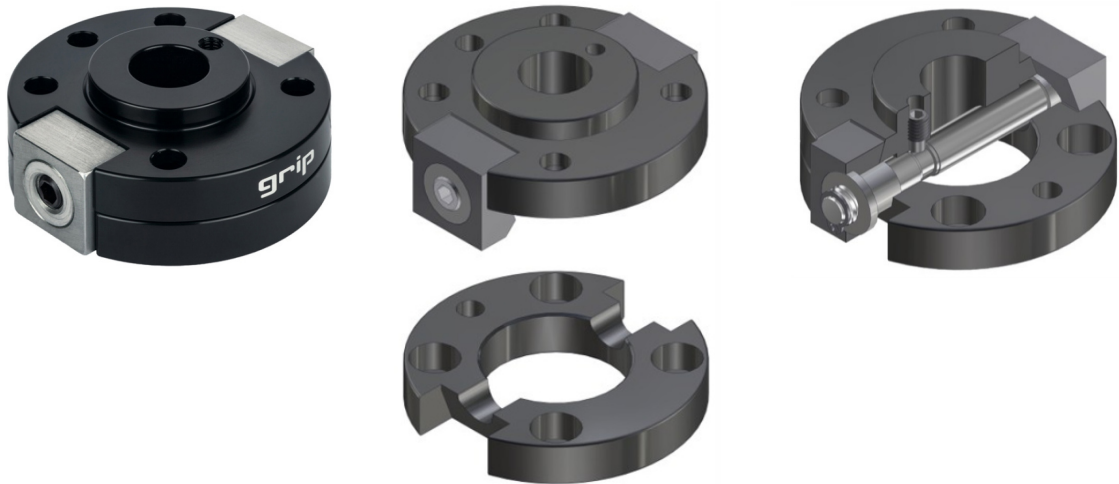


SWA 快速換模 系列

SWA050
SWA063
SWA080
SWA100
SWA125
SWA160

Quick-
Change-
Adapter

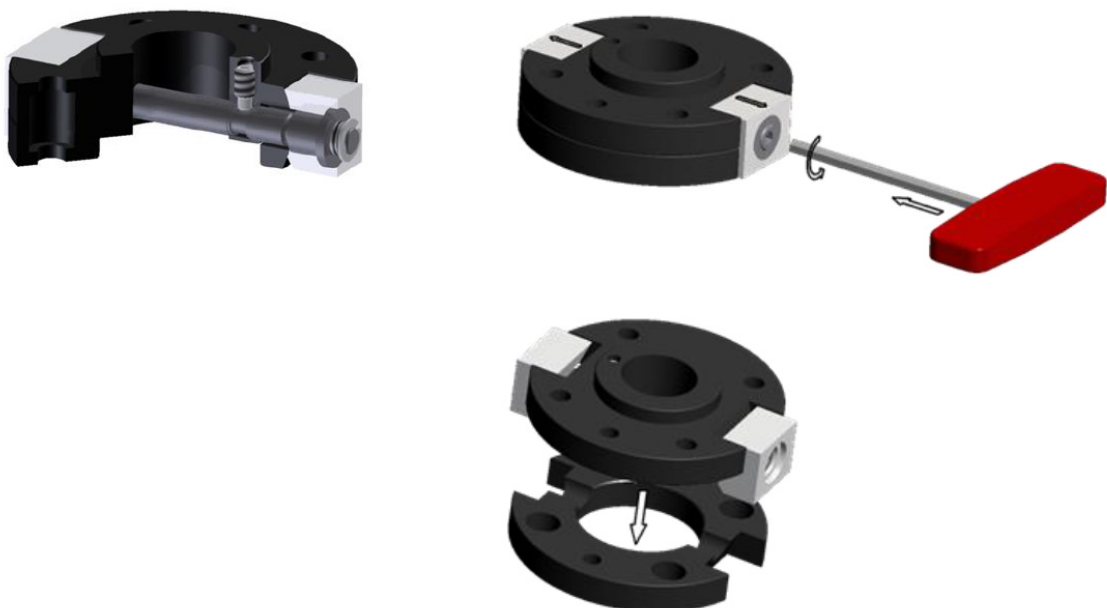


操作模式：十字頭螺釘，通過兩個楔形爪，無間隙連接&適用於要求低空間的薄厚度

優點：

- 規格：6種
- 重復精度：±0.02mm
- 大型材料選擇：高強度鋁，鋼，不銹鋼
- 符合DIN EN ISO 9409-1的連接端面
- 最高承受荷重：8 ~ 62Kg
- 承受低重量的高負載
- 50,000次更換週期壽命
- 可根據客戶的要求設計

SWA 拆/裝方式和步驟



◎ 目錄上所有的功能尺寸及公差僅供參考，本公司保有變更之權力並不事先通知。◎ 擁有任何專利及特許權者請洽詢本公司。

版权所有：上海韻耀氣動科技有限公司 021-6819 8501 ~ 2 E-mail: info@acedanyao.com

SWA050 快速換模連接系統

Quick-Change Adapter



SWA
快速換模
系列

SWA050

- SWA063
- SWA080
- SWA100
- SWA125
- SWA160

Quick-
Change-
Adapter



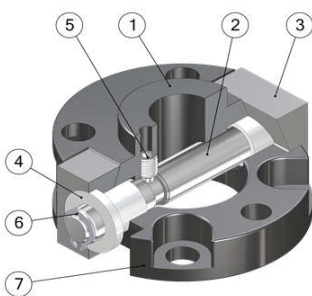
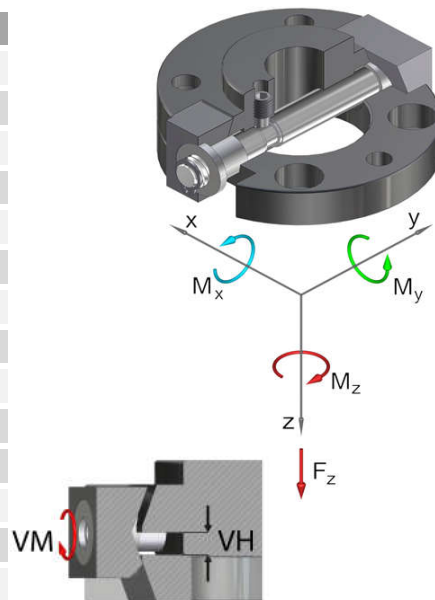
Operating mode:

By turning the axis, the upper part (1) and the lower part (2) are locked. The wedge-shaped flanges brace the system in a form-closed manner.

Advantages:

- reduced height to a minimum
- very low interference contours
- high repeatability +/- 0,02 mm
- holds up to 10.000 changing cycles
- during locking, the lower part is pulled around the locking stroke
- Interface according to DIN EN ISO 9409-1

| Technical specifications | | SWA050 | |
|---------------------------------|------------|-----------|--------------|
| Basic material | | Al, anod. | St, nitrated |
| External diameter x height [mm] | | 50 x 20 | |
| Pitch circle diameter [mm] | | 40 | |
| Repeatability +/- [mm] | | 0,02 | |
| Tension Fz [N] | | 800 | 920 |
| Compression -Fz [kN] | | 48 | 96 |
| Torsion Mz [Nm] | | 60 | 70 |
| Bend Mx [Nm] | | 60 | 70 |
| Bend My [Nm] | | 40 | 48 |
| Mass [kg] | Upper part | 0,11 | 0,2 |
| | Lower part | 0,03 | 0,1 |
| Recommended load [kg] | | 8 | 9 |
| Locking moment VM [Nm] | | 16 | |
| Locking stroke VH [mm] | | 0 - 6 | |



| Pos. | Description |
|------|--------------|
| 1 | Upper part |
| 2 | Axis |
| 3 | Flange |
| 4 | Screw nut |
| 5 | Setscrew |
| 6 | Locking ring |
| 7 | Lower part |

Quick-Change Adapter Ø50...

| | |
|---------------|---|
| G-SWA050-20 | drilled according to ISO, upper part, Al, anodized |
| G-SWA050-20-N | drilled according to ISO, upper part, steel, nitrated |
| G-SWA050-2U | drilled according to ISO, lower part, Al, anodized |
| G-SWA050-2U-N | drilled according to ISO, lower part, steel, nitrated |

Replacement axis...

| | |
|-------------|------------|
| EG-SWA050-A | for SWA050 |
|-------------|------------|

SWA 快速換模 系列

SWA050

SWA063

SWA080

SWA100

SWA125

SWA160

Quick-
Change-
Adapter



Operating mode:

By turning the axis, the upper part (1) and the lower part (2) are locked. The wedge-shaped flanges brace the system in a form-closed manner.

Advantages:

reduced height to a minimum

very low interference contours

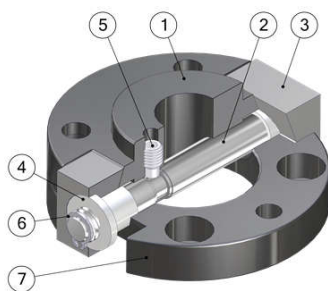
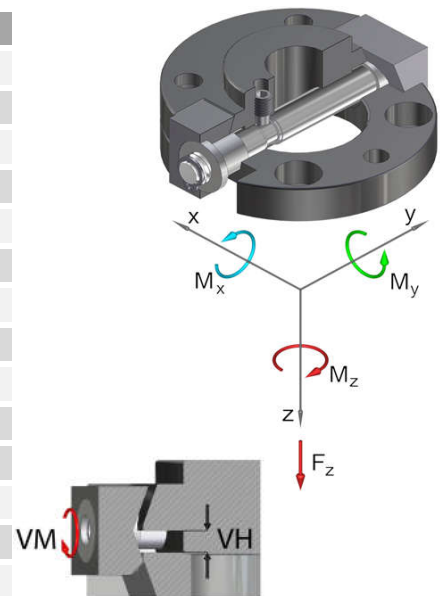
high repeatability +/- 0,02 mm

holds up to 10.000 changing cycles

during locking, the lower part is pulled around the locking stroke

Interface according to DIN EN ISO 9409-1

| Technical specifications | | SWA063 | |
|---------------------------------|------------|-----------|--------------|
| Basic material | | Al, anod. | St, nitrated |
| External diameter x height [mm] | | 63 x 20 | |
| Pitch circle diameter [mm] | | 50 | |
| Repeatability +/- [mm] | | 0,02 | |
| Tension Fz [N] | | 1.000 | 1.150 |
| Compression -Fz [kN] | | 89 | 178 |
| Torsion Mz [Nm] | | 80 | 90 |
| Bend Mx [Nm] | | 70 | 80 |
| Bend My [Nm] | | 50 | 60 |
| Mass [kg] | Upper part | 0,16 | 0,35 |
| | Lower part | 0,05 | 0,15 |
| Recommended load [kg] | | 10 | 12 |
| Locking moment VM [Nm] | | 16 | |
| Locking stroke VH [mm] | | 0 - 6 | |



| Pos. | Description |
|------|--------------|
| 1 | Upper part |
| 2 | Axis |
| 3 | Flange |
| 4 | Screw nut |
| 5 | Setscrew |
| 6 | Locking ring |
| 7 | Lower part |

Quick-Change Adapter Ø50...

G-SWA063-2O drilled according to ISO, upper part, Al, anodized

G-SWA063-2O-N drilled according to ISO, upper part, steel, nitrated

G-SWA063-2U drilled according to ISO, lower part, Al, anodized

G-SWA063-2U-N drilled according to ISO, lower part, steel, nitrated

Replacement axis...

EG-SWA063-A for SWA063



Operating mode:

By turning the axis, the upper part (1) and the lower part (2) are locked. The wedge-shaped flanges brace the system in a form-closed manner.

Advantages:

- reduced height to a minimum
- very low interference contours
- high repeatability +/- 0,02 mm
- holds up to 10.000 changing cycles
- during locking, the lower part is pulled around the locking stroke
- Interface according to DIN EN ISO 9409-1

SWA
快速換模
系列

SWA050

SWA063

SWA080

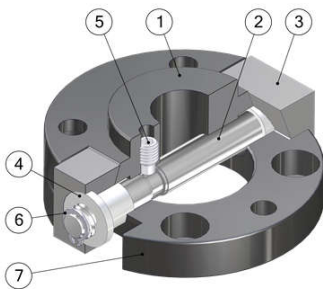
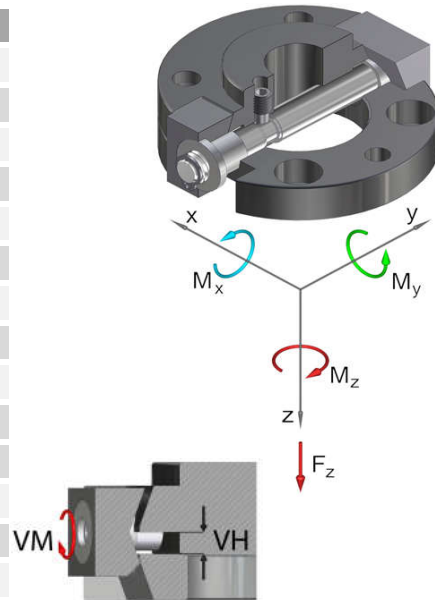
SWA100

SWA125

SWA160

Quick-
Change-
Adapter

| Technical specifications | | SWA080 | |
|---------------------------------|------------|-----------|--------------|
| Basic material | | Al, anod. | St, nitrated |
| External diameter x height [mm] | | 80 x 20 | |
| Pitch circle diameter [mm] | | 63 | |
| Repeatability +/- [mm] | | 0,02 | |
| Tension Fz [N] | | 1.200 | 1.400 |
| Compression -Fz [kN] | | 157 | 313 |
| Torsion Mz [Nm] | | 140 | 160 |
| Bend Mx [Nm] | | 120 | 140 |
| Bend My [Nm] | | 80 | 90 |
| Mass [kg] | Upper part | 0,25 | 0,5 |
| | Lower part | 0,1 | 0,25 |
| Recommended load [kg] | | 16 | 18 |
| Locking moment VM [Nm] | | 16 | |
| Locking stroke VH [mm] | | 0 - 6 | |



| Pos. | Description |
|------|--------------|
| 1 | Upper part |
| 2 | Axis |
| 3 | Flange |
| 4 | Screw nut |
| 5 | Setscrew |
| 6 | Locking ring |
| 7 | Lower part |

Quick-Change Adapter Ø50...

| | |
|---------------|---|
| G-SWA080-20 | drilled according to ISO, upper part, Al, anodized |
| G-SWA080-20-N | drilled according to ISO, upper part, steel, nitrated |
| G-SWA080-2U | drilled according to ISO, lower part, Al, anodized |
| G-SWA080-2U-N | drilled according to ISO, lower part, steel, nitrated |

Replacement axis...

| | |
|-------------|------------|
| EG-SWA080-A | for SWA080 |
|-------------|------------|

SWA 快速換模 系列

SWA050

SWA063

SWA080

SWA100

SWA125

SWA160

Quick-
Change-
Adapter



Operating mode:

By turning the axis, the upper part (1) and the lower part (2) are locked. The wedge-shaped flanges brace the system in a form-closed manner.

Advantages:

reduced height to a minimum

very low interference contours

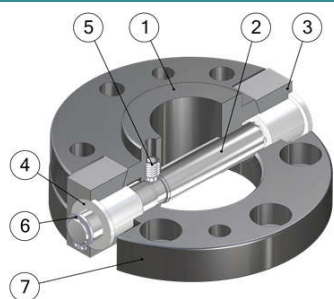
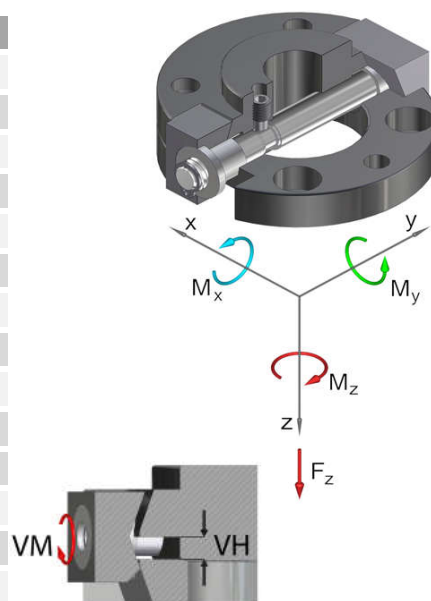
high repeatability +/- 0,02 mm

holds up to 10.000 changing cycles

during locking, the lower part is pulled around the locking stroke

Interface according to DIN EN ISO 9409-1

| Technical specifications | | SWA100 | |
|---------------------------------|------------|-----------|--------------|
| Basic material | | Al, anod. | St, nitrated |
| External diameter x height [mm] | | 100 x 30 | |
| Pitch circle diameter [mm] | | 80 | |
| Repeatability +/- [mm] | | 0,02 | |
| Tension Fz [N] | | 1.500 | 1.700 |
| Compression -Fz [kN] | | 219 | 439 |
| Torsion Mz [Nm] | | 200 | 220 |
| Bend Mx [Nm] | | 160 | 185 |
| Bend My [Nm] | | 110 | 125 |
| Mass [kg] | Upper part | 0,55 | 1,1 |
| | Lower part | 0,2 | 0,6 |
| Recommended load [kg] | | 22 | 25 |
| Locking moment VM [Nm] | | 24 | |
| Locking stroke VH [mm] | | 0 - 10 | |



| Pos. | Description |
|------|--------------|
| 1 | Upper part |
| 2 | Axis |
| 3 | Flange |
| 4 | Screw nut |
| 5 | Setscrew |
| 6 | Locking ring |
| 7 | Lower part |

Quick-Change Adapter Ø50...

| | |
|---------------|---|
| G-SWA100-20 | drilled according to ISO, upper part, Al, anodized |
| G-SWA100-20-N | drilled according to ISO, upper part, steel, nitrated |
| G-SWA100-2U | drilled according to ISO, lower part, Al, anodized |
| G-SWA100-2U-N | drilled according to ISO, lower part, steel, nitrated |

Replacement axis...

| | |
|-------------|------------|
| EG-SWA100-A | for SWA100 |
|-------------|------------|



Operating mode:

By turning the axis, the upper part (1) and the lower part (2) are locked. The wedge-shaped flanges brace the system in a form-closed manner.

Advantages:

- reduced height to a minimum
- very low interference contours
- high repeatability +/- 0,02 mm
- holds up to 10.000 changing cycles
- during locking, the lower part is pulled around the locking stroke
- Interface according to DIN EN ISO 9409-1

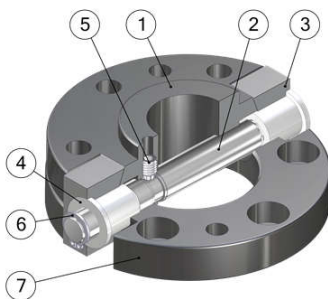
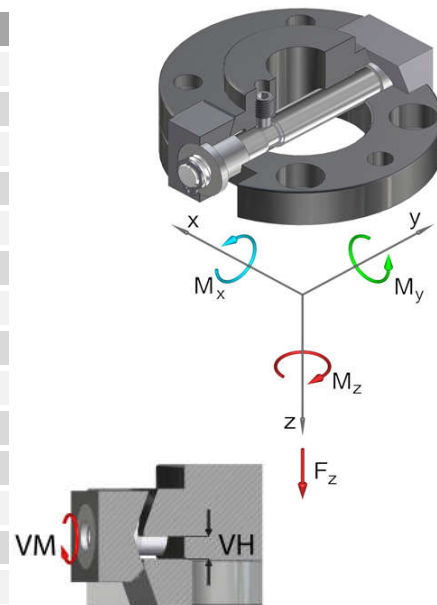
SWA
快速換模
系列

SWA050
SWA063
SWA080
SWA100

SWA125
SWA160

Quick-
Change-
Adapter

| Technical specifications | | SWA125 | |
|---------------------------------|------------|-----------|--------------|
| Basic material | | Al, anod. | St, nitrated |
| External diameter x height [mm] | | 125 x 30 | |
| Pitch circle diameter [mm] | | 100 | |
| Repeatability +/- [mm] | | 0,02 | |
| Tension Fz [N] | | 1.800 | 2.100 |
| Compression -Fz [kN] | | 377 | 754 |
| Torsion Mz [Nm] | | 300 | 350 |
| Bend Mx [Nm] | | 220 | 250 |
| Bend My [Nm] | | 150 | 175 |
| Mass [kg] | Upper part | 0,8 | 1,6 |
| | Lower part | 0,35 | 1 |
| Recommended load [kg] | | 30 | 35 |
| Locking moment VM [Nm] | | 36 | |
| Locking stroke VH [mm] | | 0 - 11 | |



| Pos. | Description |
|------|--------------|
| 1 | Upper part |
| 2 | Axis |
| 3 | Flange |
| 4 | Screw nut |
| 5 | Setscrew |
| 6 | Locking ring |
| 7 | Lower part |

Quick-Change Adapter Ø50...

| | |
|---------------|---|
| G-SWA125-20 | drilled according to ISO, upper part, Al, anodized |
| G-SWA125-20-N | drilled according to ISO, upper part, steel, nitrated |
| G-SWA125-2U | drilled according to ISO, lower part, Al, anodized |
| G-SWA125-2U-N | drilled according to ISO, lower part, steel, nitrated |

Replacement axis...

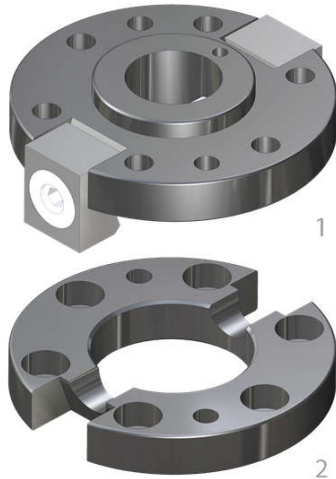
| | |
|-------------|------------|
| EG-SWA125-A | for SWA125 |
|-------------|------------|

SWA 快速換模 系列

SWA050
SWA063
SWA080
SWA100
SWA125

SWA160

Quick-
Change-
Adapter



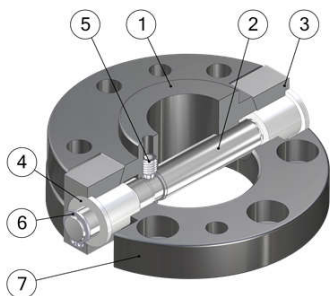
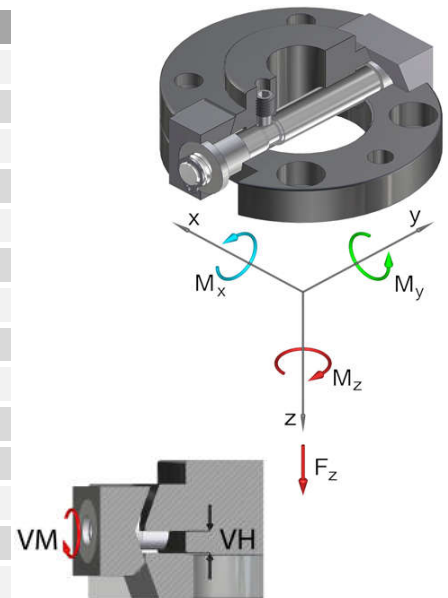
Operating mode:

By turning the axis, the upper part (1) and the lower part (2) are locked. The wedge-shaped flanges brace the system in a form-closed manner.

Advantages:

- reduced height to a minimum
- very low interference contours
- high repeatability +/- 0,02 mm
- holds up to 10.000 changing cycles
- during locking, the lower part is pulled around the locking stroke
- Interface according to DIN EN ISO 9409-1

| Technical specifications | | SWA160 | |
|---------------------------------|------------|-----------|--------------|
| Basic material | | Al, anod. | St, nitrated |
| External diameter x height [mm] | | 160 x 40 | |
| Pitch circle diameter [mm] | | 125 | |
| Repeatability +/- [mm] | | 0,02 | |
| Tension Fz [N] | | 2.800 | 3.300 |
| Compression -Fz [kN] | | 626 | 1.252 |
| Torsion Mz [Nm] | | 460 | 500 |
| Bend Mx [Nm] | | 350 | 410 |
| Bend My [Nm] | | 280 | 320 |
| Mass [kg] | Upper part | 1,75 | 3,5 |
| | Lower part | 0,8 | 2 |
| Recommended load [kg] | | 56 | 62 |
| Locking moment VM [Nm] | | 40 | |
| Locking stroke VH [mm] | | 0 - 14 | |



| Pos. | Description |
|------|--------------|
| 1 | Upper part |
| 2 | Axis |
| 3 | Flange |
| 4 | Screw nut |
| 5 | Setscrew |
| 6 | Locking ring |
| 7 | Lower part |

Quick-Change Adapter Ø50...

| | |
|---------------|---|
| G-SWA160-20 | drilled according to ISO, upper part, Al, anodized |
| G-SWA160-20-N | drilled according to ISO, upper part, steel, nitrated |
| G-SWA160-2U | drilled according to ISO, lower part, Al, anodized |
| G-SWA160-2U-N | drilled according to ISO, lower part, steel, nitrated |

Replacement axis...

| | |
|-------------|------------|
| EG-SWA160-A | for SWA160 |
|-------------|------------|