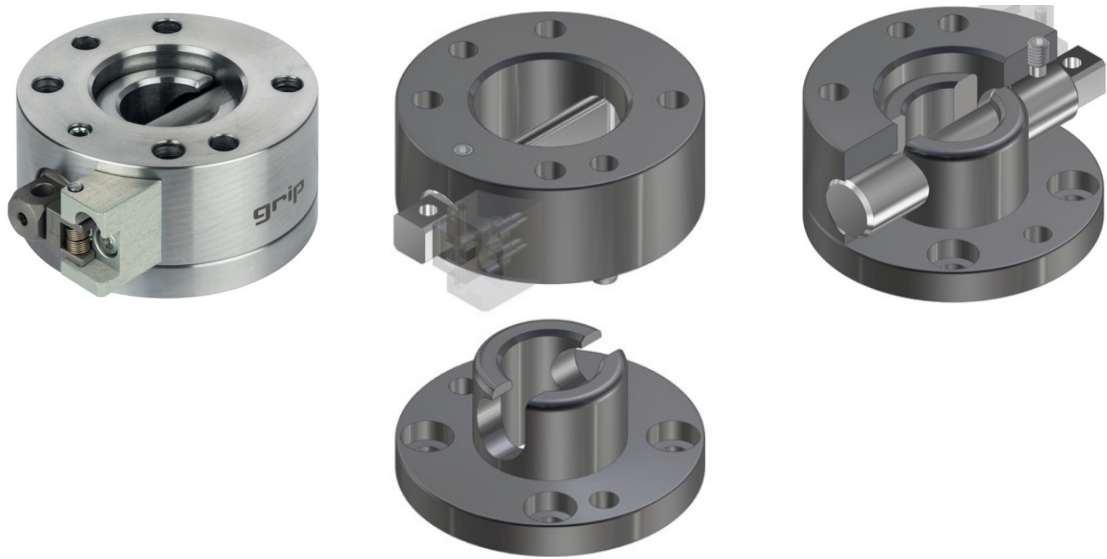


SWS 快速換模 系列

SWS050
SWS063
SWS080
SWS100
SWS125
SWS160
SWS160-B02
SWS200
SWS250

Quick-
Change-
System

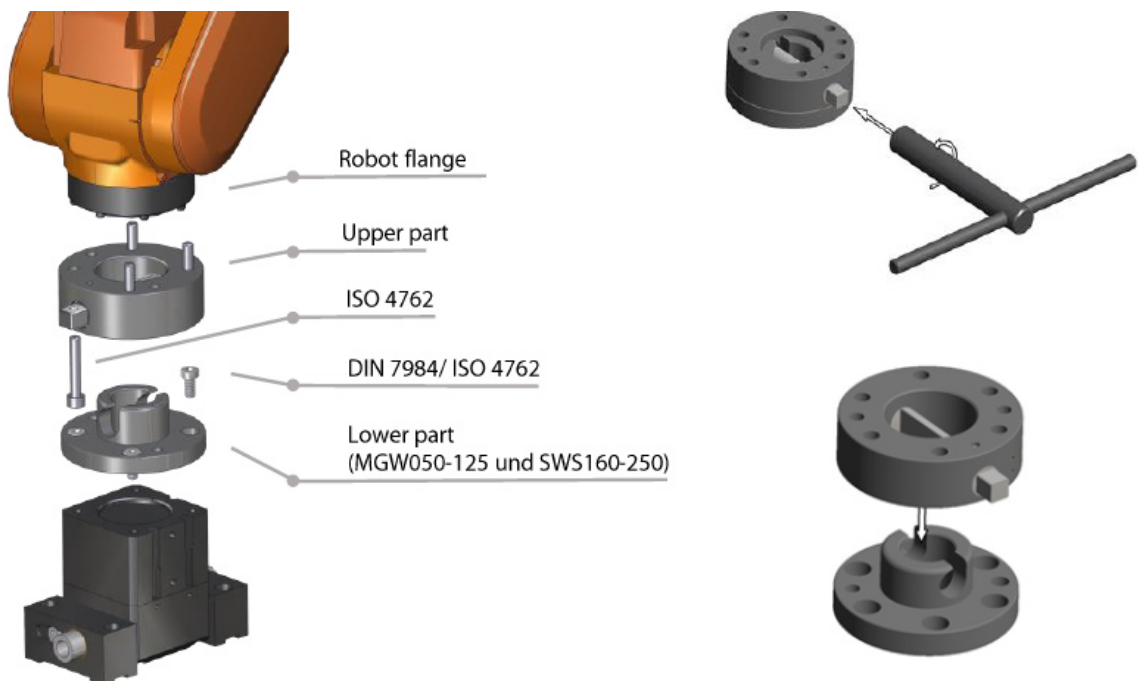


操作模式：用於增加力和力矩載荷的應用，扳手操作

優點：

- 規格：9種
- 重複精度：±0.02mm
- 鋼結構
- 符合DIN EN ISO 9409-1的連接端面
- 最高承受荷重：14 ~ 200Kg
- 承受低重量的高負載
- 50,000次更換週期壽命
- 可根據客戶的要求設計

SWS 拆/裝方式和步驟



© 目錄上所有的功能尺寸及公差僅供參考，本公司保有變更之權力並不事先通知。 ● 請有任何疑問與特殊需求請洽詢本公司。

版权所有：上海韻耀氣動科技有限公司 021-6819 8501 ~ 2 E-mail: info@acedanyao.com

SWS050 快速換模系統

Quick-Change-System

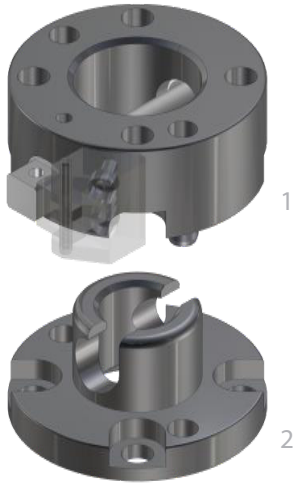


SWS 快速換模 系列

SWS050

- SWS063
- SWS080
- SWS100
- SWS125
- SWS160
- SWS160-B02
- SWS200
- SWS250

Quick- Change- System



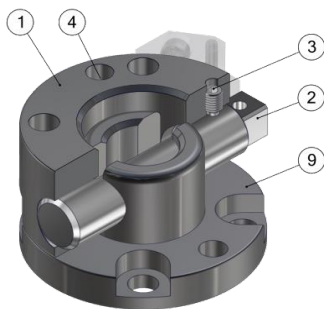
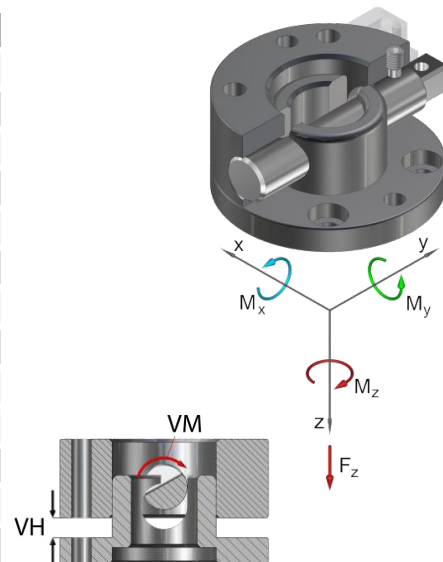
Operating mode:

By rotating the semi-cylindrical bolt by 180° the upper part (1) and the lower part (2) are braced in a form-closed manner

Advantages:

- cost-effective alternative to the MGW
 - without hand lever, thereby low interference contours
 - high repeatability +/- 0,02 mm
 - holds up to 10.000 changing cycles
 - during locking, the lower part is pulled around the locking stroke
- Interface according to DIN EN ISO 9409-1

Technical specifications		SWS050	
Basic material		steel	steel, nitrated
External diameter x Height [mm]		50 x 30	
Pitch circle diameter [mm]		40	
Repeatability +/- [mm]		0,02	
Tension Fz [N]		700	1.320
Compressive -Fz [kN]		72	96
Torsion Mz [Nm]		60	78
Bend Mx, My [Nm]		70	80
Mass [kg]	upper part	0,28	
	lower part	0,13	
Recommended load [kg]		14	16
Locking moment VM [Nm]		2 - 6	
Locking stroke VH [mm]		0 - 5	



Pos.	Description
1	Upper part SWS
2	Semi-cylindrical bolt
3	Setscrew
4	Index pin
9	Lower part MGW

Quick-Change-System Ø50...

G-SWS050-20	drilled according to ISO, upper part, steel
G-SWS050-20-N	drilled according to ISO, upper part, steel, nitrated
G-MGW050-2U-N	drilled according to ISO, lower part, steel, nitrated

Replacement semi-cylindrical bolt safety...

EG-SWS050-VS2	for SWS050
---------------	------------

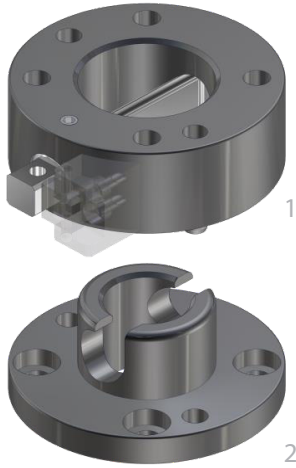
Square key wrench...

ZG-52192-SSW08	for SW 08
----------------	-----------

SWS 快速換模 系列

- SWS050
- SWS063**
- SWS080
- SWS100
- SWS125
- SWS160
- SWS160-B02
- SWS200
- SWS250

Quick- Change- System



Operating mode:

By rotating the semi-cylindrical bolt by 180° the upper part (1) and the lower part (2) are braced in a form-closed manner

Advantages:

cost-effective alternative to the MGW

without hand lever, thereby low interference contours

high repeatability +/- 0,02 mm

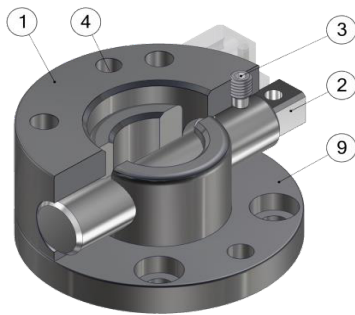
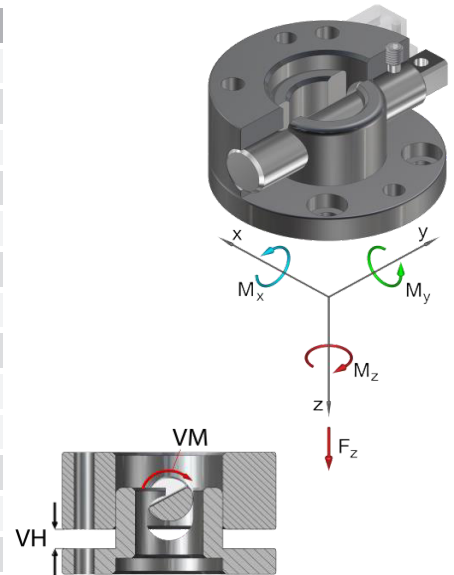
Optional connection of a power coupling MEK for electr. and pneum. Implementations

holds up to 10.000 changing cycles

during locking, the lower part is pulled around the locking stroke

Interface according to DIN EN ISO 9409-1

Technical specifications		SWS063	
Basic material		steel	steel, nitrated
External diameter x Height [mm]		63 x 32	
Pitch circle diameter [mm]		50	
Repeatability +/- [mm]		0,02	
Tension Fz [N]		1.500	1.800
Compressive -Fz [kN]		134	178
Torsion Mz [Nm]		80	105
Bend Mx, My [Nm]		100	115
Mass [kg]	upper part	0,48	
	lower part	0,23	
Recommended load [kg]		20	22
Locking moment VM [Nm]		3 - 8	
Locking stroke VH [mm]		0 - 6	



Pos.	Description
1	Upper part SWS
2	Semi-cylindrical bolt
3	Setscrew
4	Index pin
9	Lower part MGW

Quick-Change-System Ø63...

G-SWS063-20	drilled according to ISO, upper part, steel
G-SWS063-20E	drilled according to ISO, upper part, steel E-Mounting
G-SWS063-20EN	drilled according to ISO, upper part, steel E-Mounting, nitrated
G-SWS063-20-N	drilled according to ISO, upper part, steel, nitrated
G-MGW063-2UEN	drilled according to ISO, lower part, E-Mounting, steel, nitrated
G-MGW063-2U-N	drilled according to ISO, lower part, steel, nitrated

Replacement semi-cylindrical bolt safety...

EG-SWS063-VS2 for SWS063

Square key wrench...

ZG-52192-SSW09 for SW 09

© 目錄上所有的功能尺寸及公差僅供參考，本公司保有變更之權力並不事先通知。 ● 請有任何疑問與特殊需求請洽詢本公司。

SWS080 快速換模系統

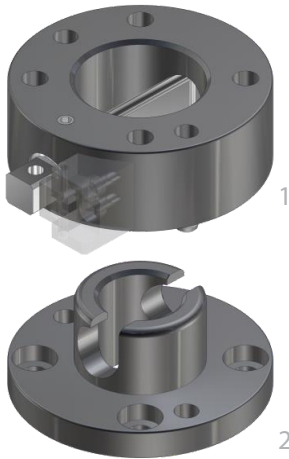
Quick-Change-System



SWS 快速換模系列

- SWS050
- SWS063
- SWS080**
- SWS100
- SWS125
- SWS160
- SWS160-B02
- SWS200
- SWS250

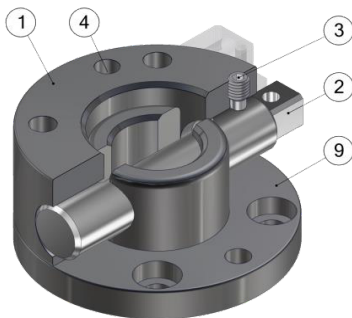
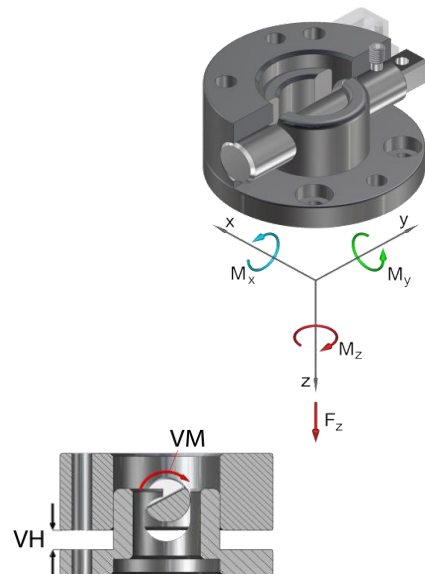
Quick-Change-System



Operating mode:
By rotating the semi-cylindrical bolt by 180° the upper part (1) and the lower part (2) are braced in a form-closed manner

Advantages:
cost-effective alternative to the MGW
without hand lever, thereby low interference contours
high repeatability +/- 0,02 mm
Optional connection of a power coupling MEK for electrical and pneumatical ducts
holds up to 10.000 changing cycles
during locking, the lower part is pulled around the locking stroke
Interface according to DIN EN ISO 9409-1

Technical specifications		SWS080	
Basic material		steel	steel, nitrated
External diameter x Height [mm]		80 x 37	
Pitch circle diameter [mm]		63	
Repeatability +/- [mm]		0,02	
Tension Fz [N]		2.500	3.000
Compressive -Fz [kN]		235	313
Torsion Mz [Nm]		100	120
Bend Mx, My [Nm]		140	160
Mass [kg]	upper part	0,92	
	lower part	0,5	
Recommended load [kg]		25	28
Locking moment VM [Nm]		3 - 9	
Locking stroke VH [mm]		0 - 8	



Pos.	Description
1	Upper part SWS
2	Semi-cylindrical bolt
3	Setscrew
4	Index pin
9	Lower part MGW

Quick-Change-System Ø80...	
G-SWS080-20	drilled according to ISO, upper part, steel
G-SWS080-20E	drilled according to ISO, upper part, steel E-Mounting
G-SWS080-20EN	drilled according to ISO, upper part, steel E-Mounting, nitrated
G-SWS080-20-N	drilled according to ISO, upper part, steel, nitrated
G-MGW080-2UEN	drilled according to ISO, lower part, E-Mounting, steel, nitrated
G-MGW080-2U-N	drilled according to ISO, lower part, steel, nitrated
Replacement semi-cylindrical bolt safety...	
EG-SWS080-VS2	for SWS063
Square key wrench...	
ZG-52192-SSW10	for SW 09

版權所有: 上海薩耀氣動科技有限公司 021-6819 8501~2 E-mail: info@acedanyao-hd.com

© 目錄上所有的功能尺寸及公差僅供參考, 本公司保有變更之權力並不事先通知。 © 請有任何疑問與技術需求, 請洽詢本公司。

SWS 快速換模系列

SWS050

SWS063

SWS080

SWS100

SWS125

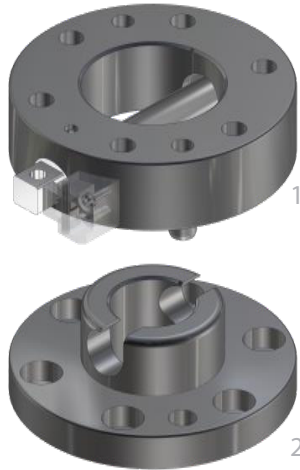
SWS160

SWS160-B02

SWS200

SWS250

Quick-Change-System



Operating mode:

By rotating the semi-cylindrical bolt by 180° the upper part (1) and the lower part (2) are braced in a form-closed manner

Advantages:

cost-effective alternative to the MGW

without hand lever, thereby low interference contours

high repeatability +/- 0,02 mm

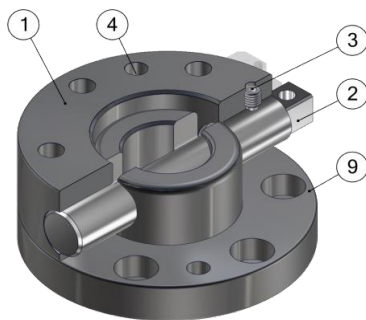
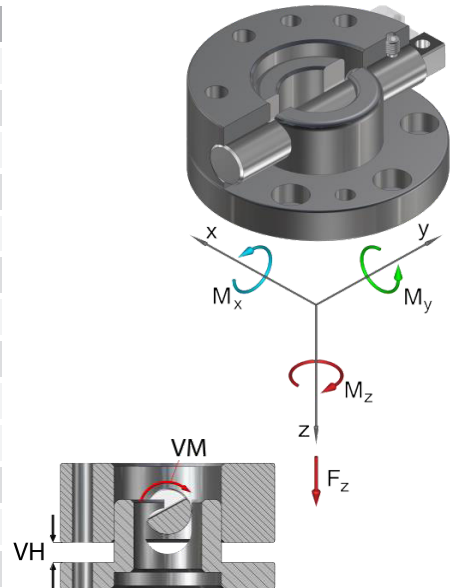
Optional connection of a power coupling MEK for electrical and pneumatical ducts

holds up to 10.000 changing cycles

during locking, the lower part is pulled around the locking stroke

Interface according to DIN EN ISO 9409-1

Technical specifications		SWS100	
Basic material		steel	steel, nitrated
External diameter x Height [mm]		100 x 45	
Pitch circle diameter [mm]		80	
Repeatability +/- [mm]		0,02	
Tension Fz [N]		3.500	4.200
Compressive -Fz [kN]		329	439
Torsion Mz [Nm]		140	185
Bend Mx, My [Nm]		180	205
Mass [kg]	upper part	1,53	
	lower part	1,01	
Recommended load [kg]		35	39
Locking moment VM [Nm]		3 - 14	
Locking stroke VH [mm]		0 - 8	



Pos.	Description
1	Upper part SWS
2	semi-cylindrical bolt
3	Setscrew
4	Index pin
9	Lower part MGW

Quick-Change-System Ø100...

G-SWS100-20	drilled according to ISO, upper part, steel
G-SWS100-20E	drilled according to ISO, upper part, steel, E-Mounting
G-SWS100-20EN	drilled according to ISO, upper part, E-Mounting, steel, nitrated
G-SWS100-20-N	drilled according to ISO, upper part, nitrated
G-MGW100-2UEN	drilled according to ISO, lower part, E-Mounting, steel, nitrated
G-MGW100-2U-N	drilled according to ISO, lower part, steel, nitrated

Replacement semi-cylindrical bolt safety...

EG-SWS100-VS2	for SWS100
---------------	------------

Square key wrench...

ZG-52192-SSW12	for SW 12
----------------	-----------

© 目錄上所有的功能尺寸及公差僅供參考，本公司保有變更之權力並不事先通知。 ● 請有任何疑問與特殊需求請洽詢本公司。

版权所有：上海薩羅氣動科技有限公司 021-6819 8501 ~ 2 E-mail: info@acedanyao.com

SWS125 快速換模系統

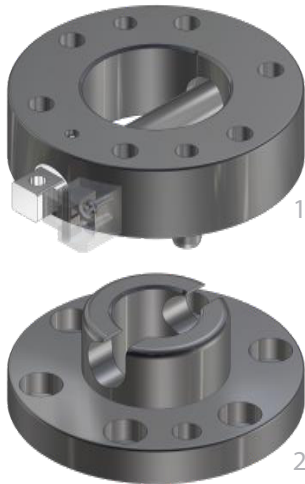
Quick-Change-System



SWS 快速換模系列

- SWS050
- SWS063
- SWS080
- SWS100
- SWS125**
- SWS160
- SWS160-B02
- SWS200
- SWS250

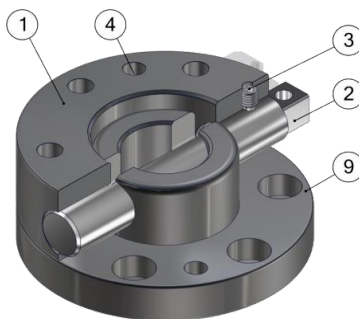
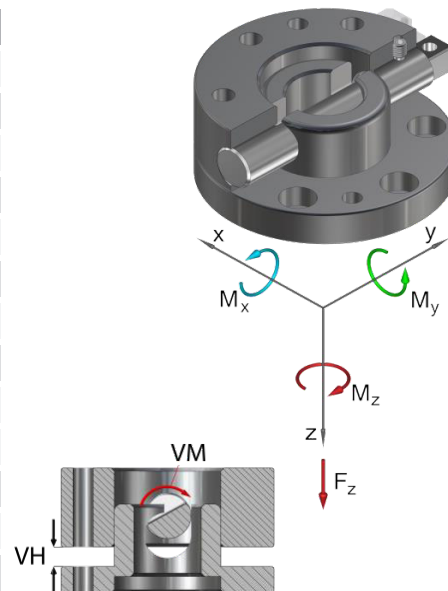
Quick-Change-System



Operating mode:
By rotating the semi-cylindrical bolt by 180° the upper part (1) and the lower part (2) are braced in a form-closed manner

Advantages:
cost-effective alternative to the MGW
without hand lever, thereby low interference contours
high repeatability +/- 0,02 mm
Optional connection of a power coupling MEK for electrical and pneumatical ducts
holds up to 10.000 changing cycles
during locking, the lower part is pulled around the locking stroke
Interface according to DIN EN ISO 9409-1

Technical specifications		SWS125	
Basic material		steel	steel, nitrated
External diameter x Height [mm]		125 x 50	
Pitch circle diameter [mm]		100	
Repeatability +/- [mm]		0,02	
Tension Fz [N]		4.500	5.200
Compressive -Fz [kN]		565	754
Torsion Mz [Nm]		180	210
Bend Mx, My [Nm]		220	250
Mass [kg]	upper part	2,8	
	lower part	1,6	
Recommended load [kg]		50	55
Locking moment VM [Nm]		3 - 20	
Locking stroke VH [mm]		0 - 8	



Pos.	Description
1	Upper part SWS
2	semi-cylindrical bolt
3	Setscrew
4	Index pin
9	Lower part MGW

Quick-Change-System Ø125...	
G-SWS125-20	drilled according to ISO, upper part, steel
G-SWS125-20E	drilled according to ISO, upper part, steel, E-Mounting
G-SWS125-20EN	drilled according to ISO, upper part, steel, nitrated, E-Mounting
G-SWS125-20-N	drilled according to ISO, upper part, nitrated
G-MGW125-2UEN	drilled according to ISO, lower part, E-Mounting, steel, nitrated
G-MGW125-2U-N	drilled according to ISO, lower part, steel, nitrated
Replacement semi-cylindrical bolt safety...	
EG-SWS125-VS2	for SWS125
Square key wrench...	
ZG-52192-SSW14	for SW 14

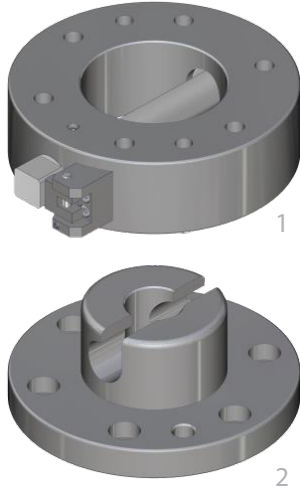
SWS 快速換模系列

SWS050
SWS063
SWS080
SWS100
SWS125

SWS160

SWS160-B02
SWS200
SWS250

Quick-Change-System



Operating mode:

By rotating the semi-cylindrical bolt by 180° the upper part (1) and the lower part (2) are braced in a form-closed manner

Advantages:

cost-effective alternative to the MGW

without hand lever, thereby low interference contours

high repeatability +/- 0,02 mm

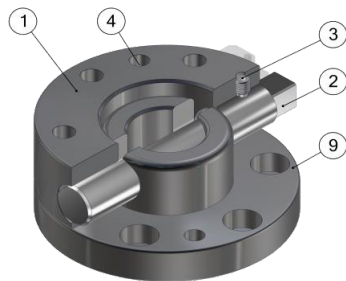
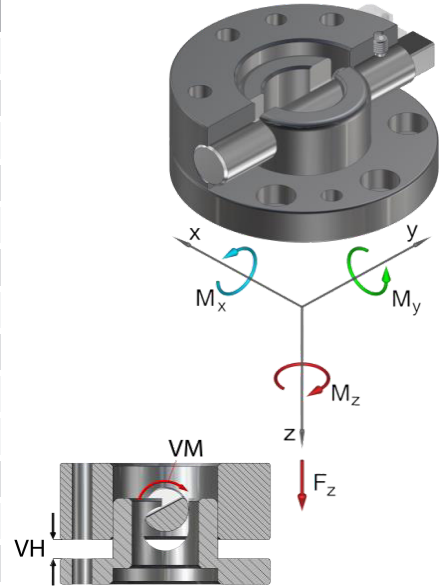
Optional connection of a power coupling MEK for electrical and pneumatical ducts

holds up to 10.000 changing cycles

during locking, the lower part is pulled around the locking stroke

Interface according to DIN EN ISO 9409-1

Technical specifications		SWS160	
Basic material		steel	steel, nitrated
External diameter x Height [mm]		160 x 70	
Pitch circle diameter [mm]		125	
Repeatability +/- [mm]		0,02	
Tension Fz [N]		8.000	10.000
Compressive -Fz [kN]		939	1.252
Torsion Mz [Nm]		750	1.000
Bend Mx, My [Nm]		850	1.000
Mass [kg]	upper part	6,6	
	lower part	3,85	
Recommended load [kg]		100	120
Locking moment VM [Nm]		4 - 30	
Locking stroke VH [mm]		0 - 10	



Pos.	Description
1	Upper part SWS
2	semi-cylindrical bolt
3	Setscrew
4	Index pin
9	Lower part MGW

Quick-Change-System Ø160 drilled according to ISO, ...

G-SWS160-20	Upper part, steel
G-SWS160-20-N	Upper part, steel nitrated
G-SWS160-20EN	Upper part, E-Mounting, steel nitrated
G-SWS160-2U	Lower part, steel
G-SWS160-2U-N	Lower part, steel nitrated
G-SWS160-2UEN	Lower part, E-Mounting, steel nitrated

Replacement semi-cylindrical bolt...

EG-SWS160-HB for SWS160

Replacement semi-cylindrical bolt safety...

EG-SWS160-VS2 for SWS160

Square key wrench...

ZG-52192-SSW20 for SW 20



Operating mode:
By rotating the semi-cylindrical bolt by 180° the upper part (1) and the lower part (2) are braced in a form-closed manner

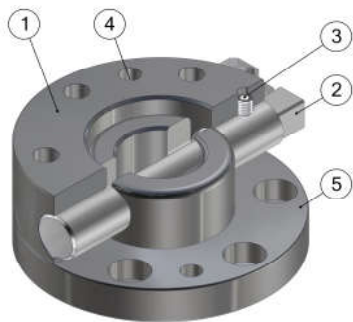
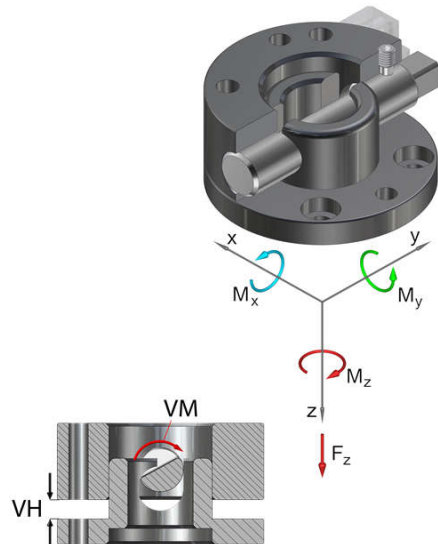
Advantages:
reinforced version with pre-centring
cost-effective alternative to the MGW
without hand lever, thereby low interference contours
high repeatability +/- 0,02 mm
Optional connection of a power coupling MEK for electrical and pneumatical ducts
holds up to 10.000 changing cycles
during locking, the lower part is pulled around the locking stroke
Interface according to DIN EN ISO 9409-1

SWS
快速換模
系列

- SWS050
- SWS063
- SWS080
- SWS100
- SWS125
- SWS160
- SWS160-B02**
- SWS200
- SWS250

Quick-Change-System

Technical specifications		SWS160-B02	
Basic material		steel	steel, nitrated
External diameter x Height [mm]		160 x 80	
Pitch circle diameter [mm]		125	
Repeatability +/- [mm]		0,02	
Tension Fz [N]		8.000	10.000
Compressive -Fz [kN]		939	1.252
Torsion Mz [Nm]		750	1.000
Bend Mx, My [Nm]		950	1.200
Mass [kg]	upper part	6,6	
	lower part	3,85	
Recommended load [kg]		100	120
Locking moment VM [Nm]		4 - 30	
Locking stroke VH [mm]		0 - 10	



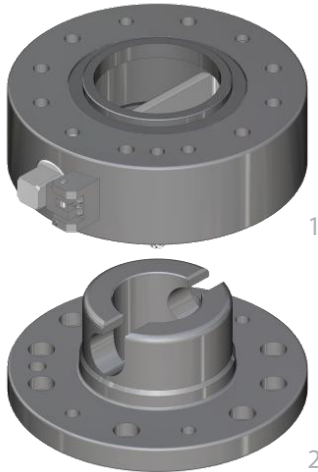
Pos.	Description
1	Upper part
2	semi-cylindrical bolt
3	Setscrew
4	Index pin
5	Lower part

G-SWS160-20/B02	drilled according to ISO, with locking piston, - pre-centring
G-SWS160-20EN/B02	drilled according to ISO, 16MnCr 5 nitrated, E-Mounting, with rotation lock, - pre-centring
G-SWS160-20-N/B02	drilled according to ISO, 16MnCr 5 nitrated, with rotation lock, - pre-centring
G-SWS160-2U/B02	drilled according to ISO, steel with pre-centring
G-SWS160-2UEN/B02	drilled according to ISO, lower part steel nitrated, with pre-centring, with E-Mounting
G-SWS160-2U-N/B02	drilled according to ISO, 16MnCr 5 nitrated, with pre-centring
Replacement semi-cylindrical bolt...	
EG-SWS160-HB	for SWS160
Replacement semi-cylindrical bolt safety...	
EG-SWS160-VS2	for SWS160
Square key wrench...	
ZG-52192-SSW20	for SW 20

SWS 快速換模 系列

- SWS050
- SWS063
- SWS080
- SWS100
- SWS125
- SWS160
- SWS160-B02
- SWS200**
- SWS250

Quick- Change- System



Operating mode:

By rotating the semi-cylindrical bolt by 180° the upper part (1) and the lower part (2) are braced in a form-closed manner

Advantages:

cost-effective alternative to the MGW

without hand lever, thereby low interference contours

high repeatability +/- 0,02 mm

Optional connection of a power coupling MEK for electrical and pneumatical ducts

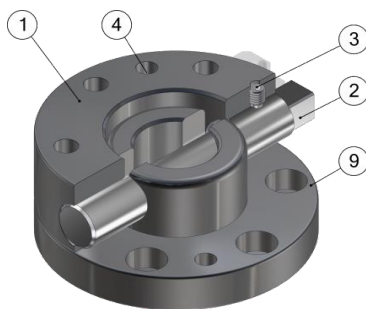
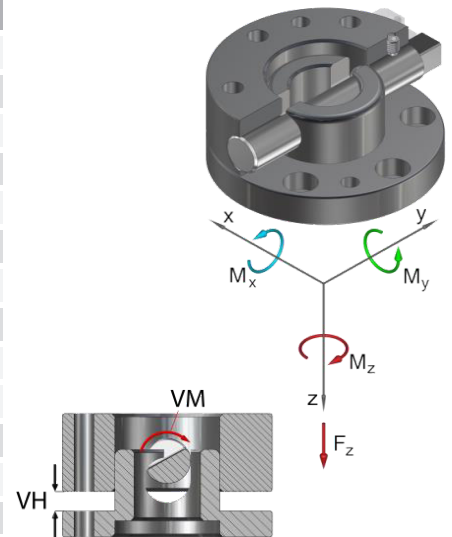
holds up to 10.000 changing cycles

during locking, the lower part is pulled around the locking stroke

Interface according to DIN EN ISO 9409-1

low dead weight due to the combination of steel and aluminum

Technical specifications		SWS200
Basic material		steel, nitrated + Al
External diameter x Height [mm]		200 x 85
Pitch circle diameter [mm]		160
Repeatability +/- [mm]		0,02
Tension Fz [N]		14.500
Compressive -Fz [kN]		1.480
Torsion Mz [Nm]		1.250
Bend Mx, My [Nm]		1.350
Mass [kg]	upper part	6,4
	lower part	6
Recommended load [kg]		160
Locking moment VM [Nm]		5 - 35
Locking stroke VH [mm]		0 - 10



Pos.	Description
1	Upper part
2	semi-cylindrical bolt
3	Setscrew
4	Index pin
9	Lower part

Quick-Change-System Ø200...

drilled according to ISO, steel nitrated, with pre-centring...

G-SWS200-2OEN	Upper part, with E-Mounting, with rotation lock
G-SWS200-2OEN-M12	for M12, Upper part, with E-Mounting, with rotation lock
G-SWS200-2O-N	Upper part, with rotation lock
G-SWS200-2O-N-M12	for M12, Upper part, with rotation lock
G-SWS200-2UEN	Lower part, with E-Mounting
G-SWS200-2UEN-M12	for M12, Lower part, with E-Mounting
G-SWS200-2U-N	Lower part
G-SWS200-2U-N-M12	for M12, Lower part

Replacement semi-cylindrical bolt...

EG-SWS200-HB for SWS200

Replacement semi-cylindrical bolt safety...

EG-SWS200-VS2 for SWS200

Square key wrench...

ZG-52192-SSW20 for SW 20

SWS250 快速換模系統

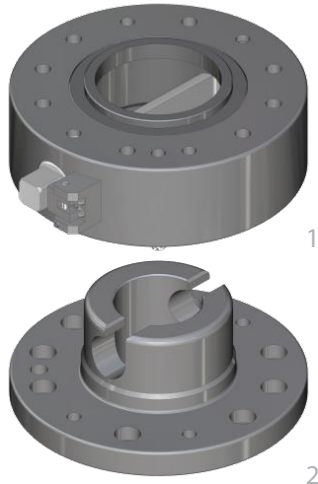
Quick-Change-System



SWS 快速換模系列

- SWS050
- SWS063
- SWS080
- SWS100
- SWS125
- SWS160
- SWS160-B02
- SWS200
- SWS250**

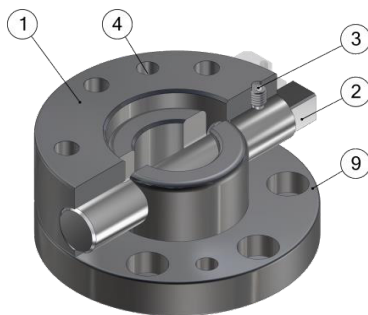
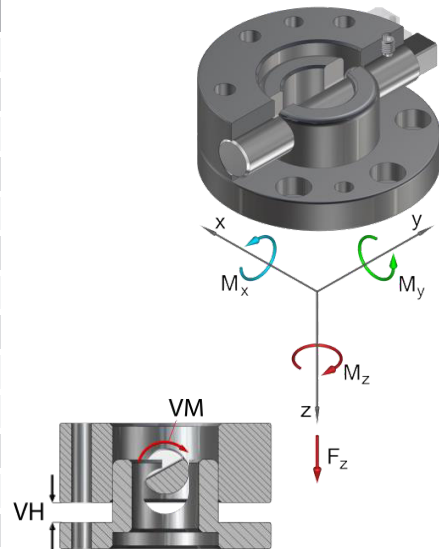
Quick-Change-System



Operating mode:
By rotating the semi-cylindrical bolt by 180° the upper part (1) and the lower part (2) are braced in a form-closed manner

Advantages:
cost-effective alternative to the MGW
without hand lever, thereby low interference contours
high repeatability +/- 0,02 mm
Optional connection of a power coupling MEK for electrical and pneumatical ducts
holds up to 10.000 changing cycles
during locking, the lower part is pulled around the locking stroke
Interface according to DIN EN ISO 9409-1
low dead weight due to the combination of steel and aluminum

Technical specifications		SWS250
Basic material		steel, nitrated + Al
External diameter x Height [mm]		250 x 104
Pitch circle diameter [mm]		200
Repeatability +/- [mm]		0,02
Tension Fz [N]		18.500
Compressive -Fz [kN]		1.950
Torsion Mz [Nm]		1.600
Bend Mx, My [Nm]		1.800
Mass [kg]	upper part	11,6
	lower part	12,2
Recommended load [kg]		200
Locking moment VM [Nm]		6 - 40
Locking stroke VH [mm]		0 - 10



Pos.	Description
1	Upper part
2	semi-cylindrical bolt
3	Setscrew
4	Index pin
9	Lower part

Quick-Change-System Ø250...	
G-SWS250-2OEN	drilled according to ISO, Upper Part, steel nitrated, E-Mounting, with rotation lock, - pre-centring
G-SWS250-2O-N	drilled according to ISO, Upper part, steel nitrated
G-SWS250-2UEN	drilled according to ISO, Lower part, with pre-centring E-Mounting, steel nitrated
G-SWS250-2U-N	drilled according to ISO, Lower part, steel nitrated
Replacement semi-cylindrical bolt...	
EG-SWS250-HB	for SWS250
Replacement semi-cylindrical bolt safety...	
EG-SWS250-HB	for SWS250
Square key wrench	
ZG-52192-SSW20	for SW 20

版權所有: 上海薩耀氣動科技有限公司 021-6819 8501~2 E-mail: info@acedanyao-ltd.com

● 目錄上所有的功能尺寸及公差僅供參考, 本公司保有變更之權力並不事先通知。 ● 如有任何疑問或特殊需求, 請洽詢本公司。