

Functionality:

The double-acting cylinder is operated via pneum. Compressed air and actuates the power unit. By two angularly arranged springs, which engage in the grooves of the bolts, the vertical is converted into horizontal movement

Advantages:

High life span

Two stroke variants stroke 1 or stroke 2

Mechanical interface according to DIN EN ISO 9409-12

low dead weight

Optional gripping force safety device "opening" via pressure spring (7)

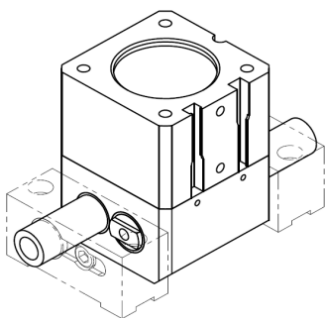
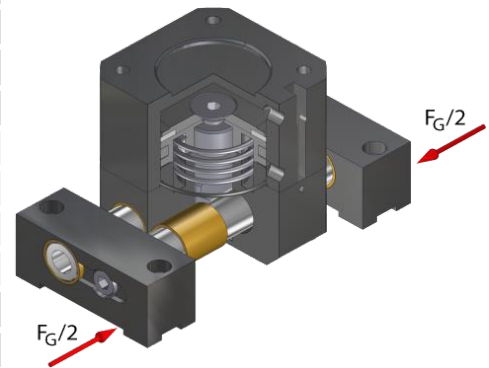
Optional gripping force safety device "closing" via pressure spring (7)

Depending on the mounting, the gripping force safety device "closing" or "opening"

Gripping force safety device

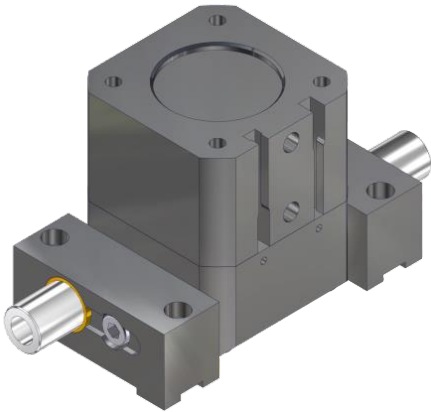
Piston position detection by means of proximity switch ZG-RSGU01 / 300-M8

technical specification			GP050	
Gripping force at 6 bar	FG [N]	Hub 1	opening	650
			shutting	560
		Hub 2	opening	325
			shutting	280
Gripping force factor	fg [N/bar]	Hub 1	opening	108
			shutting	93
		Hub 2	opening	54
			shutting	46,5
Gripping force safety device	FS [N]	Hub 1	min.	340
			max.	480
		Hub 2	min.	170
			max.	240
system stroke per jaw	h [mm]	Hub 1	3	
		Hub 2	6	
recommended component weight	mw [kg]	5		
weight gripper	mg [kg]	0,3		
air consumption per Hub	V [ccm]	4,2		
air connection	Pmax = 10 bar	M5		
mounting flange	ISO	4 x M4 auf TK ø40		



parallel gripper Ø50...

G-GP050-I1-GÖ	ISO-flange, Hub 1 gripping force safety device opening
G-GP050-I1-GS	ISO-flange, Hub 1 gripping force safety device shutting
G-GP050-I1-O	ISO-flange, Hub 1 without gripping force safety device
G-GP050-I2-GÖ	ISO-flange, Hub 2 gripping force safety device opening
G-GP050-I2-GS	ISO-flange, Hub 2 gripping force safety device shutting
G-GP050-I2-O	ISO-flange, Hub 2 without gripping force safety device



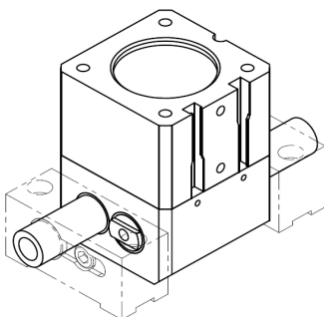
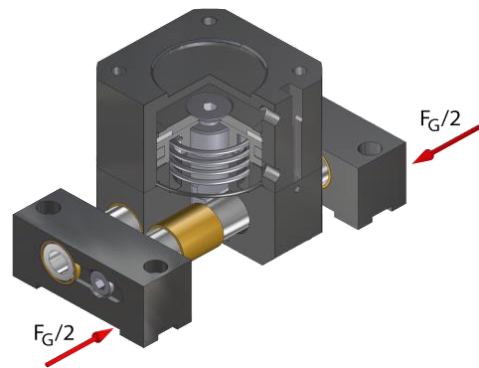
Functionality:

The double-acting cylinder is operated via pneum. Compressed air and actuates the power unit. By two angularly arranged springs, which engage in the grooves of the bolts, the vertical is converted into horizontal movement

Advantages:

- High life span
- Two stroke variants stroke 1 or stroke 2
- Mechanical interface according to DIN EN ISO 9409-12
- low dead weight
- Optional gripping force safety device "opening" via pressure spring (7)
- Optional gripping force safety device "closing" via pressure spring (7)
- Depending on the mounting, the gripping force safety device "closing" or "opening"
- Gripping force safety device
- Piston position detection by means of proximity switch ZG-RSGU01 / 300-M8

technical specification			GP063	
Gripping force at 6 bar	FG [N]	Hub 1	opening	1200
			shutting	1000
		Hub 2	opening	600
			shutting	500
Gripping force factor	fg [N/bar]	Hub 1	opening	200
			shutting	166
		Hub 2	opening	100
			shutting	46,5
Gripping force safety device	FS [N]	Hub 1	min.	500
			max.	760
		Hub 2	min.	250
			max.	380
system stroke per jaw	h [mm]	Hub 1	4	
		Hub 2	8	
recommended component weight	mw [kg]	10		
weight gripper	mg [kg]	0,4		
air consumption per Hub	V [ccm]	10		
air connection	Pmax = 10 bar	M5		
mounting flange	ISO	4 x M5 auf TK ø50		



parallel gripper Ø50...

G-GP063-I1-GÖ	ISO-flange, Hub 1 gripping force safety device opening
G-GP063-I1-GS	ISO-flange, Hub 1 gripping force safety device shutting
G-GP063-I1-O	ISO-flange, Hub 1 without gripping force safety device
G-GP063-I2-GÖ	ISO-flange, Hub 2 gripping force safety device opening
G-GP063-I2-GS	ISO-flange, Hub 2 gripping force safety device shutting
G-GP063-I2-O	ISO-flange, Hub 2 without gripping force safety device

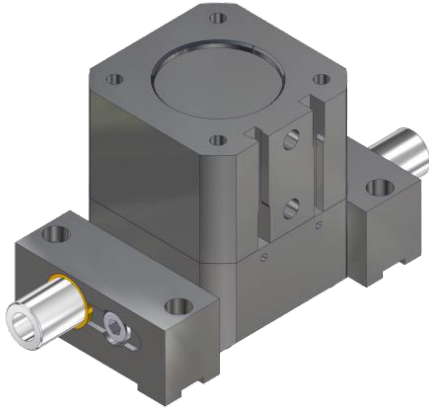
© 目錄上所有的功能尺寸及公差僅供參考，本公司保有變更之權力並不事先通知。 © 如有任何疑問請洽詢本公司。

GP 系列 平行 夾爪

GP050
GP063
GP080

GP100
GP125
RSGU

Parallel
gripper
氣壓精密
強力平行
夾爪



Functionality:

The double-acting cylinder is operated via pneum. Compressed air and actuates the power unit. By two angularly arranged springs, which engage in the grooves of the bolts, the vertical is converted into horizontal movement

Advantages:

High life span

Two stroke variants stroke 1 or stroke 2

Mechanical interface according to DIN EN ISO 9409-12

low dead weight

Optional gripping force safety device "opening" via pressure spring (7)

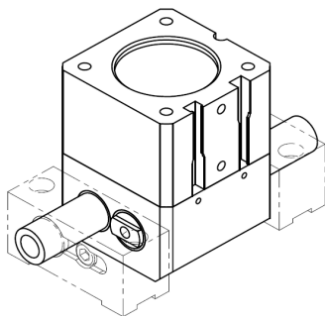
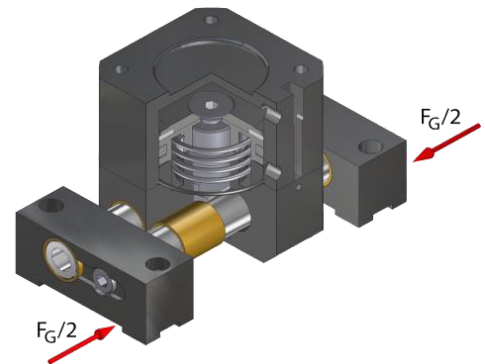
Optional gripping force safety device "closing" via pressure spring (7)

Depending on the mounting, the gripping force safety device "closing" or "opening"

Gripping force safety device

Piston position detection by means of proximity switch ZG-RSGU01 / 300-M8

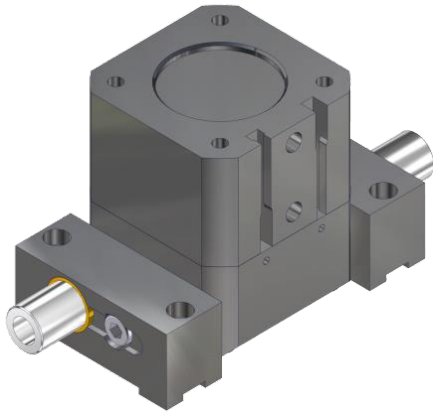
technical specification			GP080	
Gripping force at 6 bar	FG [N]	Hub 1	opening	1800
			shutting	1600
		Hub 2	opening	900
			shutting	800
Gripping force factor	fg [N/bar]	Hub 1	opening	300
			shutting	266
		Hub 2	opening	150
			shutting	46,5
Gripping force safety device	FS [N]	Hub 1	min.	320
			max.	790
		Hub 2	min.	160
			max.	395
system stroke per jaw	h [mm]	Hub 1	5	
		Hub 2	10	
recommended component weight		mw [kg]	15	
weight gripper		mg [kg]	0,9	
air consumption per Hub		V [ccm]	19,6	
air connection		Pmax = 10 bar	M5	
mounting flange		ISO	4 x M6 auf TK ø63	



parallel gripper Ø50...

G-GP080-I1-GÖ	ISO-flange, Hub 1 gripping force safety device opening
G-GP080-I1-GS	ISO-flange, Hub 1 gripping force safety device shutting
G-GP080-I1-O	ISO-flange, Hub 1 without gripping force safety device
G-GP080-I2-GÖ	ISO-flange, Hub 2 gripping force safety device opening
G-GP080-I2-GS	ISO-flange, Hub 2 gripping force safety device shutting
G-GP080-I2-O	ISO-flange, Hub 2 without gripping force safety device

© 目錄上所有的功能尺寸及公差僅供參考，本公司保有變更之權力並不事先通知。 © 擁有任何權利及特權要求並歸本公司。



Functionality:

The double-acting cylinder is operated via pneum. Compressed air and actuates the power unit. By two angularly arranged springs, which engage in the grooves of the bolts, the vertical is converted into horizontal movement

Advantages:

- High life span
- Two stroke variants stroke 1 or stroke 2
- Mechanical interface according to DIN EN ISO 9409-12
- low dead weight
- Optional gripping force safety device "opening" via pressure spring (7)
- Optional gripping force safety device "closing" via pressure spring (7)
- Depending on the mounting, the gripping force safety device "closing" or "opening"
- Gripping force safety device
- Piston position detection by means of proximity switch ZG-RSGU01 / 300-M8

GP
系列
平行
夾爪

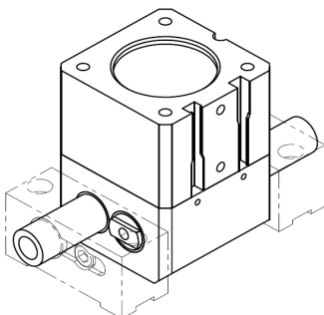
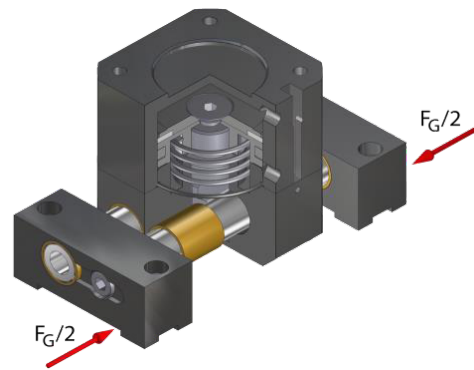
GP050
GP063
GP080

GP100

GP125
RSGU

Parallel
gripper
氣壓精密
強力平行
夾爪

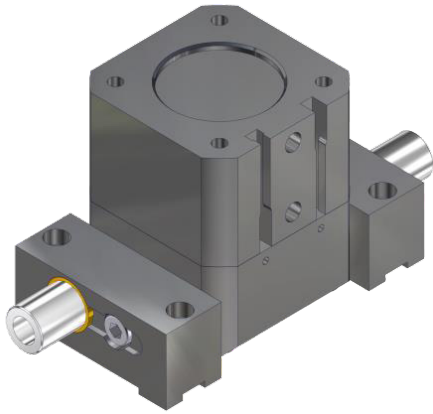
technical specification			GP100	
Gripping force at 6 bar	FG [N]	Hub 1	opening	3200
			shutting	2800
		Hub 2	opening	1600
			shutting	1400
Gripping force factor	fg [N/bar]	Hub 1	opening	530
			shutting	466
		Hub 2	opening	265
			shutting	46,5
Gripping force safety device	FS [N]	Hub 1	min.	770
			max.	1500
		Hub 2	min.	385
			max.	750
system stroke per jaw	h [mm]	Hub 1	6	
		Hub 2	12	
recommended component weight	mw [kg]	25		
weight gripper	mg [kg]	1,9		
air consumption per Hub	V [ccm]	38,6		
air connection	Pmax = 10 bar	G 1/8		
mounting flange	ISO	4 x M8 TK ø80		



parallel gripper Ø50...

G-GP100-I1-GÖ	ISO-flange, Hub 1 gripping force safety device opening
G-GP100-I1-GS	ISO-flange, Hub 1 gripping force safety device shutting
G-GP100-I1-O	ISO-flange, Hub 1 without gripping force safety device
G-GP100-I2-GÖ	ISO-flange, Hub 2 gripping force safety device opening
G-GP100-I2-GS	ISO-flange, Hub 2 gripping force safety device shutting
G-GP100-I2-O	ISO-flange, Hub 2 without gripping force safety device

© 目錄上所有的功能尺寸及公差僅供參考，本公司保有變更之權力並不事先通知。 © 請有任何疑問與特殊需求，請洽詢本公司。



Functionality:

The double-acting cylinder is operated via pneum. Compressed air and actuates the power unit. By two angularly arranged springs, which engage in the grooves of the bolts, the vertical is converted into horizontal movement

Advantages:

High life span

Two stroke variants stroke 1 or stroke 2

Mechanical interface according to DIN EN ISO 9409-12

low dead weight

Optional gripping force safety device "opening" via pressure spring (7)

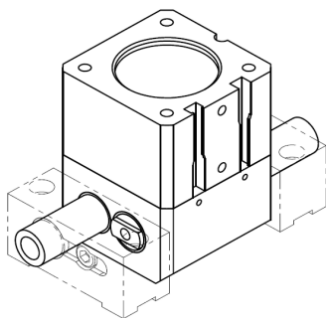
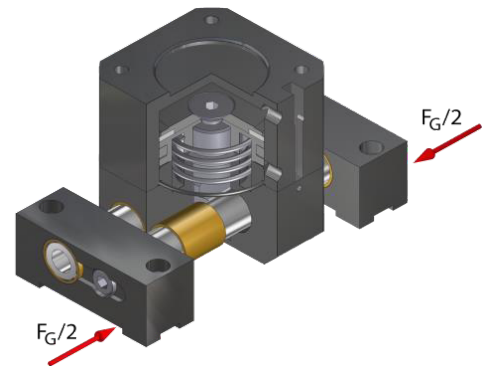
Optional gripping force safety device "closing" via pressure spring (7)

Depending on the mounting, the gripping force safety device "closing" or "opening"

Gripping force safety device

Piston position detection by means of proximity switch ZG-RSGU01 / 300-M8

technical specification			GP125	
Gripping force at 6 bar	FG [N]	Hub 1	opening	4900
			shutting	4100
		Hub 2	opening	2450
			shutting	2050
Gripping force factor	fg [N/bar]	Hub 1	opening	816
			shutting	683
		Hub 2	opening	408
			shutting	46,5
Gripping force safety device	FS [N]	Hub 1	min.	1100
			max.	2200
		Hub 2	min.	550
			max.	1100
system stroke per jaw	h [mm]	Hub 1	7	
		Hub 2	14	
recommended component weight		mw [kg]	40	
weight gripper		mg [kg]	3	
air consumption per Hub		V [ccm]	70,4	
air connection		Pmax = 10 bar	G 1/8	
mounting flange		ISO	4 x M8 TK ø100	



parallel gripper Ø50...

G-GP125-I1-GÖ	ISO-flange, Hub 1 gripping force safety device opening
G-GP125-I1-GS	ISO-flange, Hub 1 gripping force safety device shutting
G-GP125-I1-O	ISO-flange, Hub 1 without gripping force safety device
G-GP125-I2-GÖ	ISO-flange, Hub 2 gripping force safety device opening
G-GP125-I2-GS	ISO-flange, Hub 2 gripping force safety device shutting
G-GP125-I2-O	ISO-flange, Hub 2 without gripping force safety device

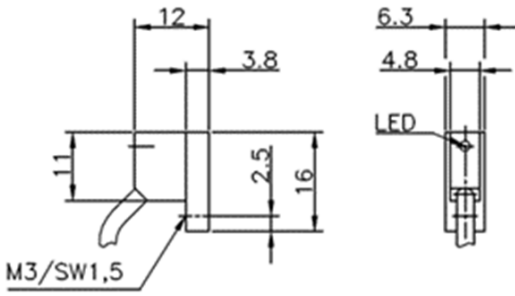
© 目錄上所有的功能尺寸及公差僅供參考，本公司保有變更之權力並不事先通知。 © 擁有任何權利及特權並受法律保護本公司。

RSGU 氣壓平行夾爪 近接開關

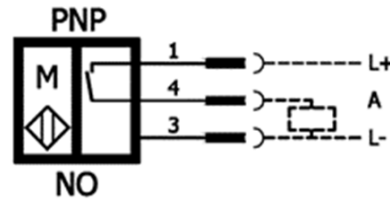
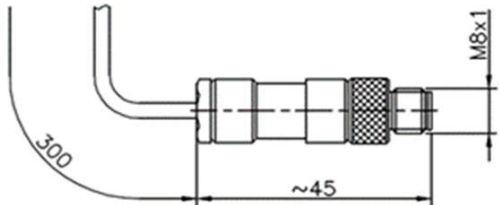


GP
系列
平行
夾爪
近接
開關

GP050
GP063
GP080
GP100
GP125
RSGU

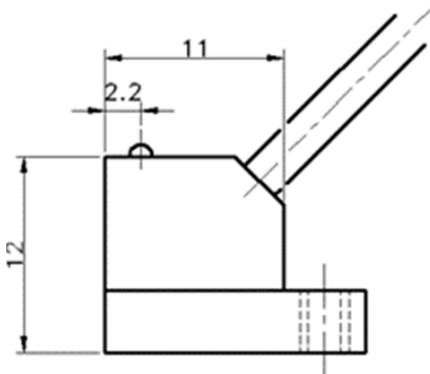


Technical specification	RSGU01-300-M8
DC 3-Wire	16x12x6,3 mm
Switching output	PNP-closing contact
Operating voltage UB	10 - 30V DC
Rated operational current Ie	max. 400 Hz
Voltage drop Du	≤3V (at I _{max} = 400mA)
Temperature range	- 25° C ... +80° C
Short-circuit strength	integrated
Inverse-polarity protection	integrated
Protection class DIN 60 5029	IP67
Switching status display	LED
Connection M8	0,3m PVC Wire: 3x0,04mm ²
Housing material	Plastic material

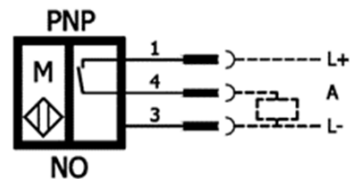
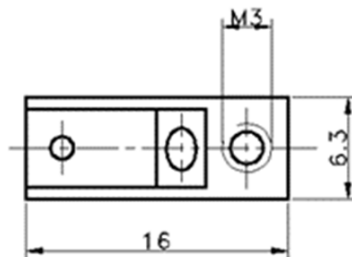
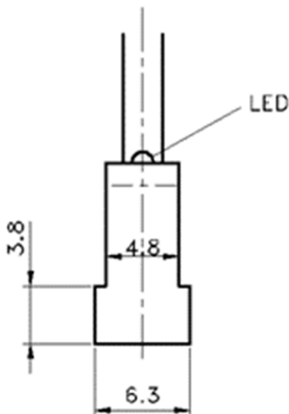


Electronic magnetic switch

ZG-RSGU01-300-M8 for G-GP..., Signal transmitter with LED, with M8 plug



Technical specification	RSGU01
DC 3-Wire	16x12x6,3 mm
Switching output	PNP-closing contact
Operating voltage UB	10 - 30V DC
Rated operational current Ie	max. 400 Hz
Voltage drop Du	≤3V (bei I _{max} = 400mA)
Temperature range	- 25° C ... +80° C
Short-circuit strength	integrated
Inverse-polarity protection	integrated
Protection class DIN 60 5029	IP67
Switching status display	LED
Connection M8	2 m PVC Wire: 3x0,04mm ²
Housing material	Plastic material



Electronic magnetic switch

ZG-RSGU01 Magnetic proximity switch

© 目錄上所有的功能尺寸及公差僅供參考，本公司保有變更之權力並不事先通知。 © 請有任何疑問或特殊需求，請洽詢本公司。